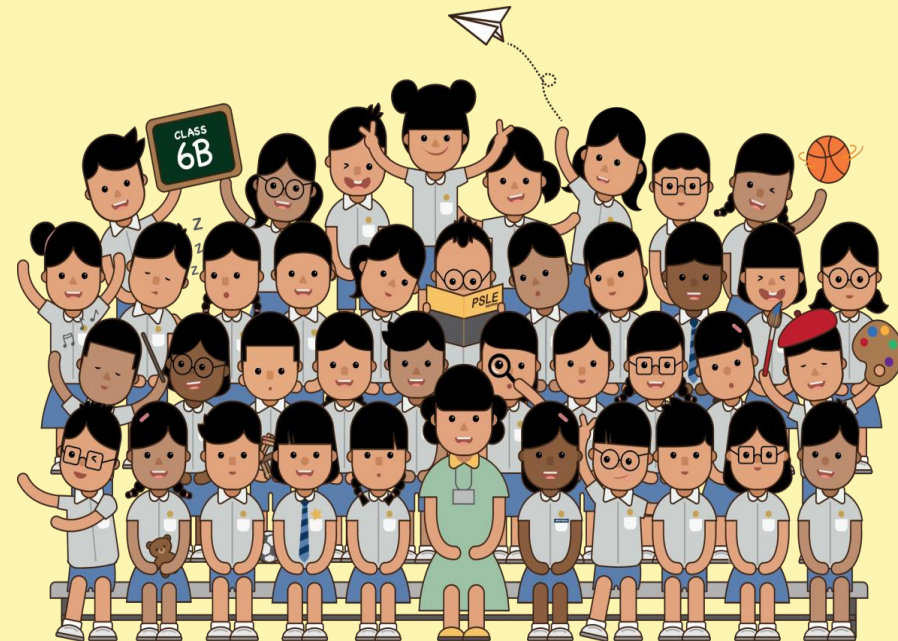


# UPDATES ON PSLE SCORING & S1 POSTING FROM 2021

## IT'S PART OF A BIGGER STORY

**P4 & P5 CTP NETWORKING SESSION**  
**31 JAN 2020**



# OVERVIEW



## All students

- How PSLE Scoring Works
- How S1 Posting Works
- Presentation of results in Achievement Levels
- Subject-based Banding (Primary Schools)
  - Scoring for Foundation Subjects

## Students taking HMTL

- Eligibility for Higher Mother Tongue Language (HMTL) in Secondary Schools
- Use of Higher Chinese Language (HCL) for Admission to SAP Schools

## MTL-exempt, AsL or FL students

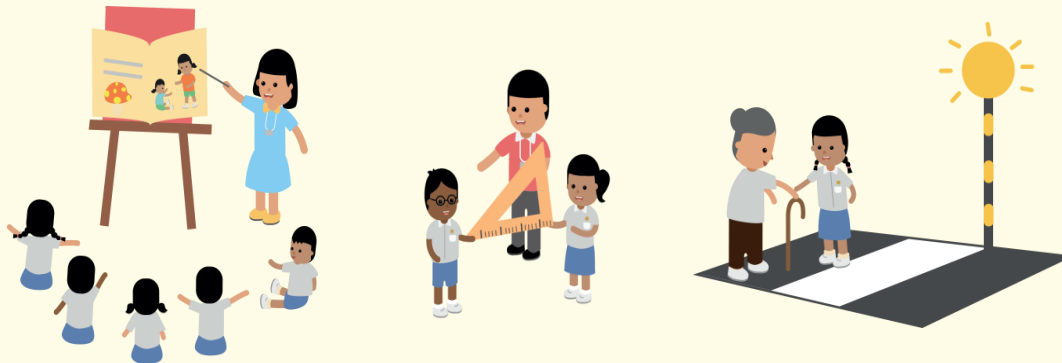
- Scoring for Mother Tongue Language (MTL)-exempt students and students studying an Asian Language/ Foreign Language (AsL/FL) in lieu of an MTL

# THE PSLE CHANGES ARE PART OF A BIGGER STORY

Over the years, we have been fine-tuning the education system to help our students discover and develop their strengths and interests, while moving away from an over-emphasis on academic results.

Our PSLE scoring changes aim to:

- Reduce fine differentiation at a young age
- Recognise students' level of achievement, regardless of how their peers have done

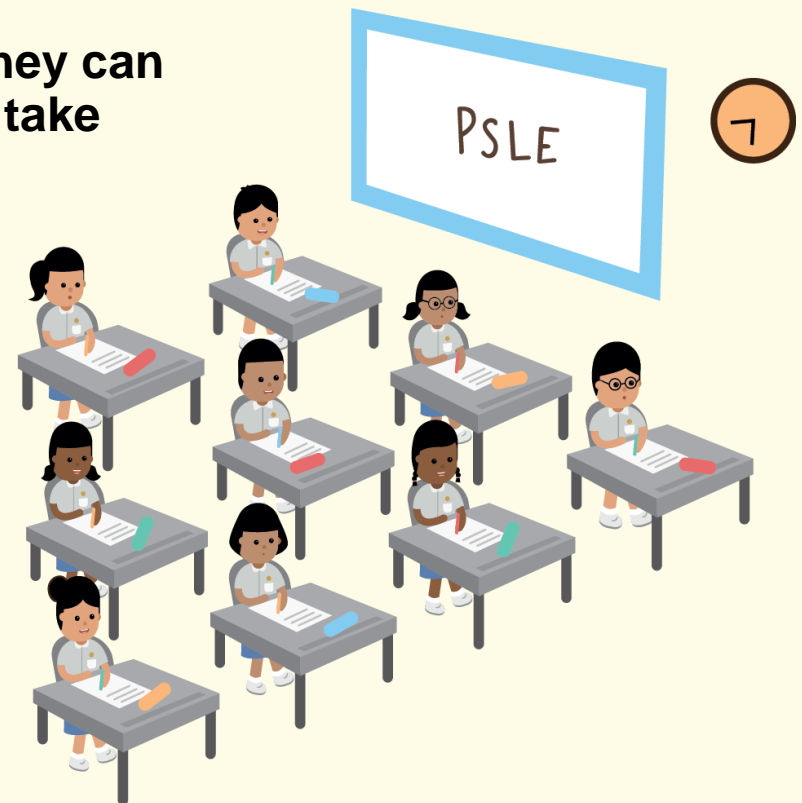


PSLE Microsite



# THE PSLE REMAINS A USEFUL CHECKPOINT

- To understand where our children are at in their learning after six years of primary school
- Gauge their learning needs so that they can progress to a secondary school and take subjects at a suitable level



# HOW PSLE SCORING WORKS



[Changes to the PSLE scoring and S1 posting](#)



[What you need to know about the new PSLE scoring system](#)

# FROM T-SCORE TO WIDER SCORING BANDS

Reflects a student's individual level of achievement

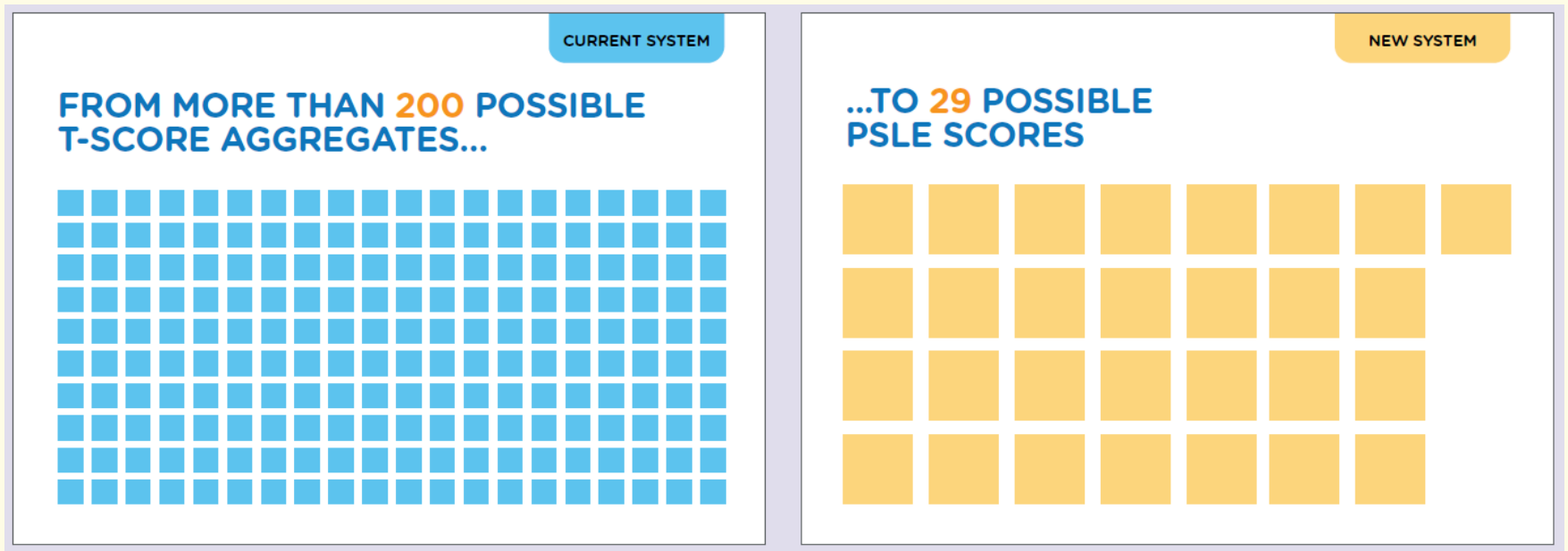
Unlike the current T-score, students' AL for each subject will reflect their level of achievement, rather than how they have performed relative to their peers.

<b>AL</b>	<b>RAW MARK RANGE</b>
<b>1</b>	<b>≥ 90</b>
<b>2</b>	<b>85 – 89</b>
<b>3</b>	<b>80 – 84</b>
<b>4</b>	<b>75 – 79</b>
<b>5</b>	<b>65 – 74</b>
<b>6</b>	<b>45 – 64</b>
<b>7</b>	<b>20 – 44</b>
<b>8</b>	<b>&lt; 20</b>

# FROM T-SCORE TO WIDER SCORING BANDS

Reduces fine differentiation of students

Students with similar scores in each subject will be grouped into wider bands measured in Achievement Levels (ALs).



Students' scores are differentiated finely. Students can have a T-score aggregate of less than 80 to more than 280, which gives **more than 200 possible different T-score aggregates**.

Students will be placed in fewer groups of PSLE Scores. Students' PSLE scores (the sum of the AL for each subject) will range from **4 to 32**, which gives **29 possible different scores**.

# FROM T-SCORE TO WIDER SCORING BANDS

- The PSLE Score replaces the T-score aggregate.
- It is obtained by adding the ALs of four subjects.
- The PSLE Score ranges from 4 to 32, with 4 being the best.
- Students will be placed in secondary school courses based on their PSLE score – Express, Normal (Academic) or Normal (Technical).



ENGLISH	AL3
MOTHER TONGUE	AL2
MATHEMATICS	AL1
SCIENCE	AL2

**PSLE SCORE: 8**

PLACEMENT OUTCOME	PSLE SCORE
EXPRESS	4 – 20
EXPRESS / N(A) OPTION	21 – 22
N(A)	23 – 24
N(A) / N(T) option	25
N(T)	26-30, with AL7 or better in both EL <u>and</u> MA





## WHY ARE THE AL BANDS NOT EVEN?

AL bands and mark ranges are set based on the **learning objectives of the curriculum, and mirror the way we learn:**

- When we learn something new, after some initial practice, we often find ourselves improving significantly.
- But as we get better, the improvements become small steps, and finally, as we reach a high level, we inch just a little further, even after much learning and practice.

The ALs were designed to reflect this reality of learning. They help educators, students, and parents know **how ready students are to access the curriculum at the next level.**

AL	RAW MARK RANGE
1	$\geq 90$
2	85 – 89
3	80 – 84
4	75 – 79
5	65 – 74
6	45 – 64
7	20 – 44
8	$< 20$



# IN SUMMARY...

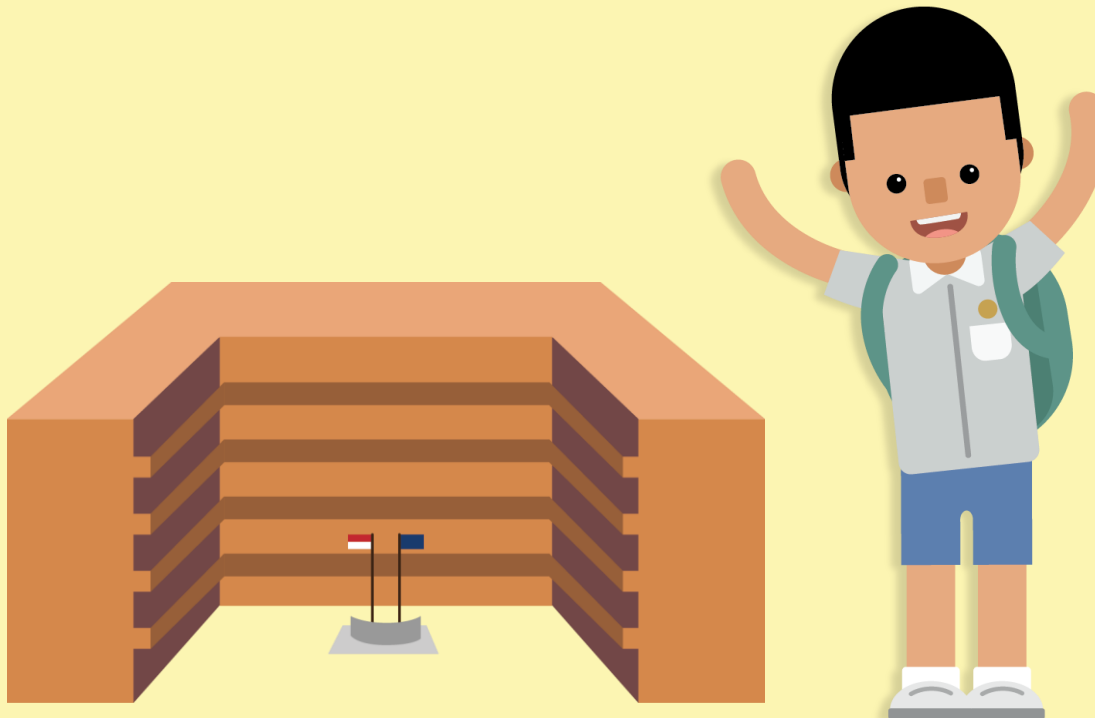
## WHAT REMAINS

- Same 4 subjects are tested, and scores are awarded to guide students' choices for the next stage of their education journey
- Curriculum is continually updated. This is not related to the PSLE scoring and S1 posting changes.

## WHAT CHANGES

- The T-score Aggregate will be replaced by the PSLE Score, to reduce the fine differentiation of our students at a young age based on exam scores.
- Students will be assessed based on their own achievement, instead of comparing them to their peers.

# HOW S1 POSTING WORKS



# CHOICE ORDER OF SCHOOLS WILL MATTER MORE

- Academic merit, i.e. the PSLE Score, remains the first criterion for secondary school posting.
- If two students with the same PSLE Score vie for a place in a school, the following tie-breakers will be used:

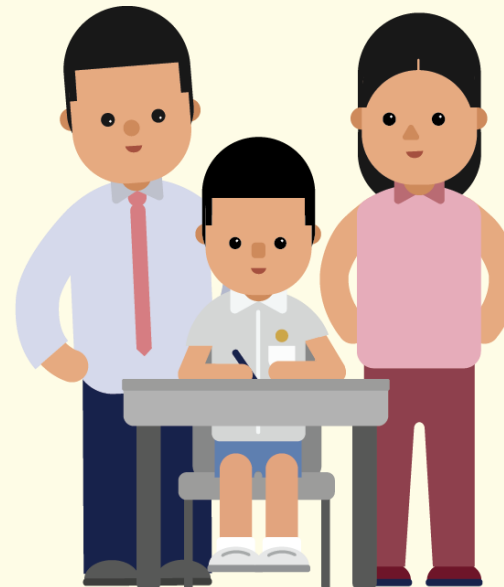
1. CITIZENSHIP
2. CHOICE ORDER OF SCHOOLS **(NEW)**
3. COMPUTERISED BALLOTING



# CHOOSING SECONDARY SCHOOLS

- Consider your child's strengths and interests when making school choices in order to find a school that would help your child learn and thrive best.
- Each school has its own distinctive programmes, culture and niche areas. There are many ways to find out more about secondary schools' distinctive programmes such as:-
  - i. MOE's SchoolFinder tool;
  - ii. secondary schools' websites;
  - iii. school open houses.

MOE SchoolFinder  
Tool



# PRESENTATION OF RESULTS IN ACHIEVEMENT LEVELS



# PRESENTATION OF RESULTS IN ALs

- Starting from the 2020 P5 cohort, schools will present school-based examination results of P5 and P6 students in ALs.
  - 2020 P6 students will not be affected, nor will P1 to P4 students.
- This will help familiarise students and parents with the new AL scoring system.
- The AL reflects the mastery of a broader curriculum, rather than for topical or component performance. As such, **AL will not be reflected for weighted assessments (WA).**

**Holistic Development Profile**

Page: 1 of 1  
Date: 29 Nov 2020

Name : Joyce  
Age on 1st Jan : 10  
Class : 5 Challenge      S/N : 5  
Form Teacher : Miss Tan  
Co-Form teacher : Miss Low

Identification No: T09XXXXXF  
Subject Combination: 3S1F(FSC)

SUBJECT	TERM 3: WA	END OF YEAR EXAM		OVERALL	
	Mark	Mark	AL	Mark	AL
ENGLISH LANGUAGE	85	88	2	86	2
MATHEMATICS	74	76	4	75	4
FOUNDATION SCIENCE	65	74	B	70	B
CHINESE LANGUAGE	87	88	2	88	2
	Grade		Grade		Grade
SOCIAL STUDIES	-	-		-	A
ART	-	-		-	A
MUSIC	-	-		-	B
PHYSICAL EDUCATION	-	-		-	B

**OVERALL**

Total Achievement Level (AL) Score : 15  
Attendance : 95/95  
Class for Next Year : P6-CH  
Subject Combination for Next Year : 3S1F(FSC)

AL will **not** be reflected for WA

Update from "Grade" to "AL"

New Field to compute "Total AL Score"

# **SUBJECT-BASED BANDING (PRIMARY)**

## **OFFERING DIFFERENT SUBJECT COMBINATIONS**





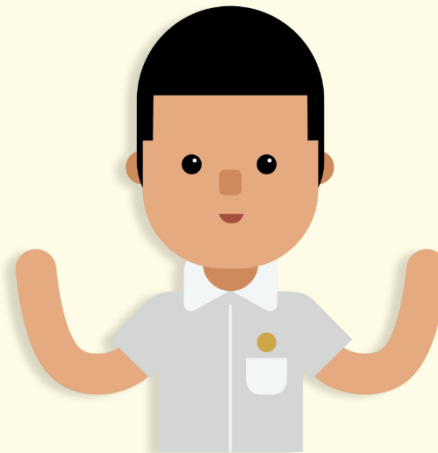
# SUBJECT-BASED BANDING (PRIMARY)

- Offers students the option of Standard and Foundation Subjects, depending on their strengths.
- Allow students to focus on and stretch their potential in the subjects they are strong in while building up the fundamentals in the subject they need more support in.
- The new PSLE scoring system will not change the considerations for deciding on a student's subject combination.



# SUBJECT-BASED BANDING (PRIMARY)

- Schools will continue to recommend based on the following:
  - Student's aptitude, motivation and performance in each subject;
  - Student's ability to cope with a particular subject combination; and
  - Whether the subject combination focuses sufficiently on literacy and numeracy, and facilitates the student's articulation to secondary school and beyond.
- Offering subjects at Foundation level is not a disadvantage to the students. It enables them to focus on building up strong fundamentals in these subjects and better prepares them for progression to secondary school.



# SCORING FOR FOUNDATION LEVEL SUBJECTS



# FOUNDATION SUBJECTS GRADED IN 5 BANDS TODAY

- Under the current PSLE grading system, Foundation subjects are graded in 5 scoring bands from Grade 1 to U.

Current System	
Grade	Raw Mark Range
1	85 – 100
2	70 – 84
3	50 – 69
4	30 – 49
U	< 30

# FOUNDATION LEVEL SUBJECT GRADES TO BE LESS FINELY DIFFERENTIATED

- Under the new AL system, to reduce fine differentiation among students, Foundation subject grades will be graded in 3 scoring bands from AL A to C.
- Like Standard subject ALs, the Foundation subject ALs will reflect a student's level of achievement, rather than how they have performed relative to their peers.

Foundation Level AL Reflected on Result Slip	Foundation Raw Mark Range
A	75 – 100
B	30 – 74
C	< 30

# FOUNDATION LEVEL SUBJECT GRADES

- For the purpose of S1 posting, Foundation level AL A to AL C will be mapped to AL 6 to AL 8 of Standard level subjects respectively, to derive a student's overall PSLE Score.
- Similar to the current PSLE scoring system, this mapping is based on the learning and assessment load of the subjects, and informs students of their readiness to access the curriculum at the secondary level.

Foundation Level AL Reflected on Result Slip	Foundation Raw Mark Range	Equivalent Standard Subject AL	Standard Raw Mark Range
A	75 – 100	6	45-64
B	30 – 74	7	20-44
C	< 30	8	<20

# SCORING OF FOUNDATION SUBJECTS FOR S1 POSTING

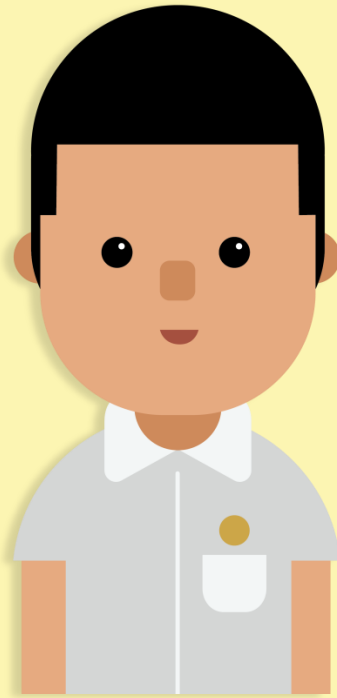
- A student's PSLE Score is the sum of the four AL scores across his/her Standard and Foundation subjects.
- Students taking Foundation subjects are eligible for the Express Course, as long as they meet the course placement criteria.
- With Full Subject-based Banding in secondary schools, students may also take subjects at a higher level for those that they are strong in.



ENGLISH	AL3
FOUNDATION MOTHER TONGUE	ALB
FOUNDATION MATHEMATICS	ALB
SCIENCE	AL5
<b>PSLE SCORE: 22</b>	

PLACEMENT OUTCOME	PSLE SCORE
EXPRESS	4 – 20
EXPRESS / N(A) option	21 – 22
N(A)	23 – 24
N(A) / N(T) option	25
N(T)	26 – 30, with AL7 or better in both EL and MA

# ELIGIBILITY FOR SECONDARY SCHOOL HIGHER MOTHER TONGUE LANGUAGE (HMTL)





# ELIGIBILITY FOR HMTL IN SECONDARY SCHOOLS

- The eligibility criteria for taking HMTL is intended to ensure that students can cope with the higher academic load, and takes reference from the current criteria.

## ELIGIBILITY CRITERIA FOR SECONDARY SCHOOL HMTL

(i) PSLE Score of 8 or better

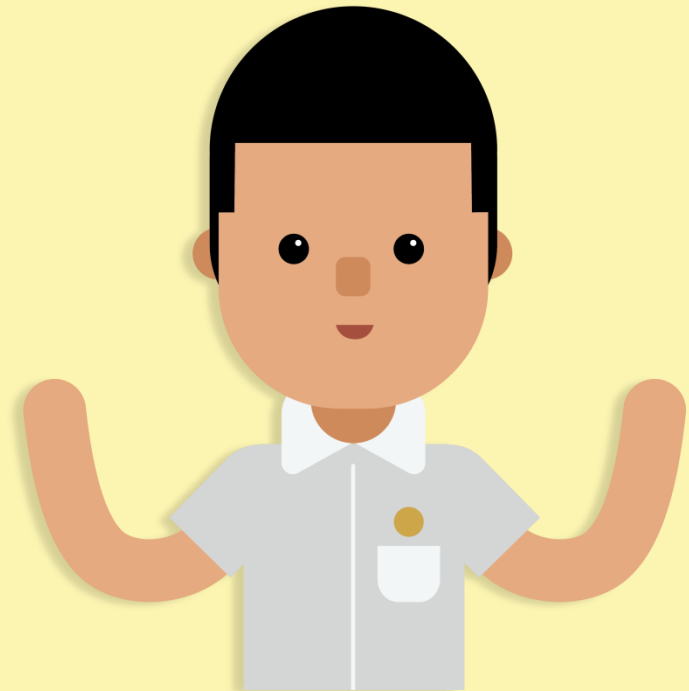
OR

(ii) PSLE Score of 9 to 14 inclusive; and attain

- AL1 / AL2 in MTL or
- Distinction / Merit in HMTL

- For students who do not meet the above criteria, secondary schools will continue to have the flexibility to offer HMTL to students, if they are assessed to have high ability and interest in MTL and are able to take HMTL without affecting their performance in other subjects.

# USE OF HCL FOR ADMISSION INTO SAP SCHOOLS



# USE OF HCL FOR ADMISSION INTO SAP SCHOOLS

## New System

The HCL posting advantage for entry to SAP schools will continue







- Students will be ranked taking into account their performance in HCL.
- This posting advantage applies before the tie-breakers for S1 posting.

## Current System

Students' HCL grades give posting advantage for SAP schools

- Currently, for admission to SAP schools, students are awarded bonus T-score points based on their HCL grade:  
3 points for Distinction  
2 points for Merit  
1 point for Pass



1st		7	NO HCL
2nd		8	DISTINCTION
3rd		8	MERIT
4th		8	PASS
5th		8	NO HCL
6th		9	DISTINCTION

# SCORING FOR MTL-EXEMPT AND STUDENTS STUDYING AN ASIAN LANGUAGE/ FOREIGN LANGUAGE (AsL/FL) IN LIEU OF AN MTL



# SCORING FOR MTL-EXEMPT AND AsL/FL STUDENTS

- For students who are exempted from MTL or take an AsL/FL in lieu of an official MTL, their PSLE result slip will only reflect the three subjects they have taken.
- However, for the purposes of Secondary 1 posting, these students will need an assigned MTL score so that they have a PSLE score comprising four subjects
  - To determine the assigned MTL score, reference is made to MTL scores of other students who have achieved similar scores in English, Mathematics, and Science.
  - This is the same approach taken in today's T-score system.



# SCORING FOR MTL-EXEMPT AND AsL/FL STUDENTS

- In reviewing the score assignment for these students under the new PSLE scoring system, we needed to strike a balance between:
  - Acknowledging that students have valid reasons for seeking MTL exemption or taking an AsL/FL, and
  - Ensuring some parity between scoring for exemption, Foundation and Standard MTL.

# SCORING FOR MTL-EXEMPT AND AsL/FL STUDENTS

- Under the new scoring system, the assigned MTL score will :
  - Take reference from peers with similar scores for English, Mathematics and Science;
  - While maintaining parity of treatment with students who take Foundation MTL (who will score between AL 6 to 8).
- Hence, students will receive an assigned MTL score between AL 6 to 8 in PSLE.



In summary

# FAMILIARISING STUDENTS AND PARENTS WITH THE NEW SYSTEM AND GUIDING THEM IN MAKING SUBJECT CHOICES

2019

Primary 4

**Scoring for Foundation level subjects** – to guide students and parents on whether to take Foundation level subjects at PSLE

**Eligibility for Secondary School HMTL** – to guide students and parents on whether to take HMTL at PSLE

2020

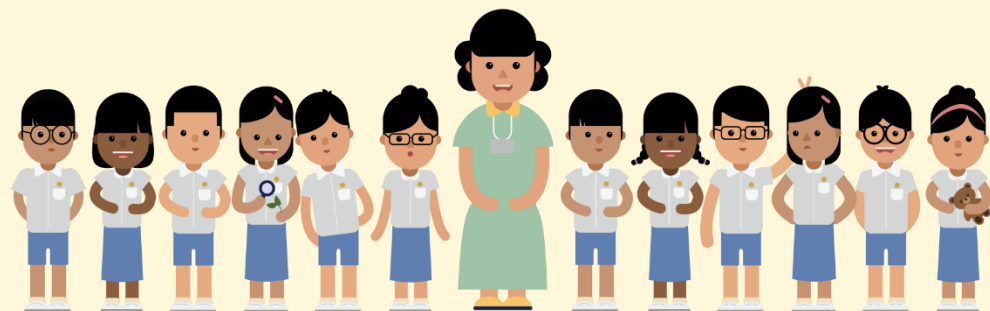
Primary 5

**School Results in Achievement Levels (ALs)** – to familiarise students and parents to the new system

2021

Primary 6

**Release of Indicative AL COPs** – to guide students and parents in making school choices





# THANK YOU!

