

P1 e-ORIENTATION DAY 2021

FRIDAY, 19 NOVEMBER 2021

A Leader. A Keen Learner. A Friend. *Integrity • Respect • Excellence*



PROGRAMME

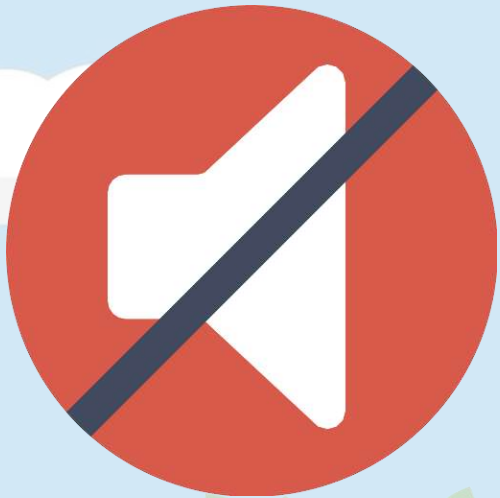
08.45 am	Parents/Guardians and P1 Clementians joining the Webinar
09.00 am	Introduction by Year Head/Lower Primary and Welcome Address by Principal
09.15 am	Briefing on General Matters by Vice-Principals and Year Head/Lower Primary
09.55 am	Q & A Segment
10.00 am	Breakout session into Form Classes
11.00 am	End of P1 e-Orientation Day 2021

A Leader. A Keen Learner. A Friend.

Integrity • Respect • Excellence



HOUSEKEEPING MATTERS



All microphones are muted during the Webinar.



All cameras are disabled during the Webinar.



You may use the chat function to ask questions.

A Leader. A Keen Learner. A Friend.

Integrity • Respect • Excellence



SCHOOL VISION

A Leader. A Keen Learner. A Friend.

A leader who takes initiative to lead, with confidence and integrity.

A keen learner who is enthusiastic about learning and strives for excellence.

A friend who is sincere and works well with others, showing respect and empathy.

A Leader. A Keen Learner. A Friend. *Integrity • Respect • Excellence*



SCHOOL MISSION & VALUES

OUR MISSION

To inspire Clementians to lead with integrity, strive for excellence and be kind to all.

OUR VALUES

INTEGRITY • RESPECT • EXCELLENCE

A Leader. A Keen Learner. A Friend.

Integrity • Respect • Excellence





A Leader. A Keen Learner. A Friend.

Integrity • Respect • Excellence





A Leader. A Keen Learner. A Friend.

Integrity • Respect • Excellence





A Leader. A Keen Learner. A Friend.

Integrity • Respect • Excellence





A Leader. A Keen Learner. A Friend.

Integrity • Respect • Excellence



We are learning to:

Tuesday

2017



- Monday
- Wednesday
- Thursday
- Friday
- Saturday
- Sunday
- Confidence

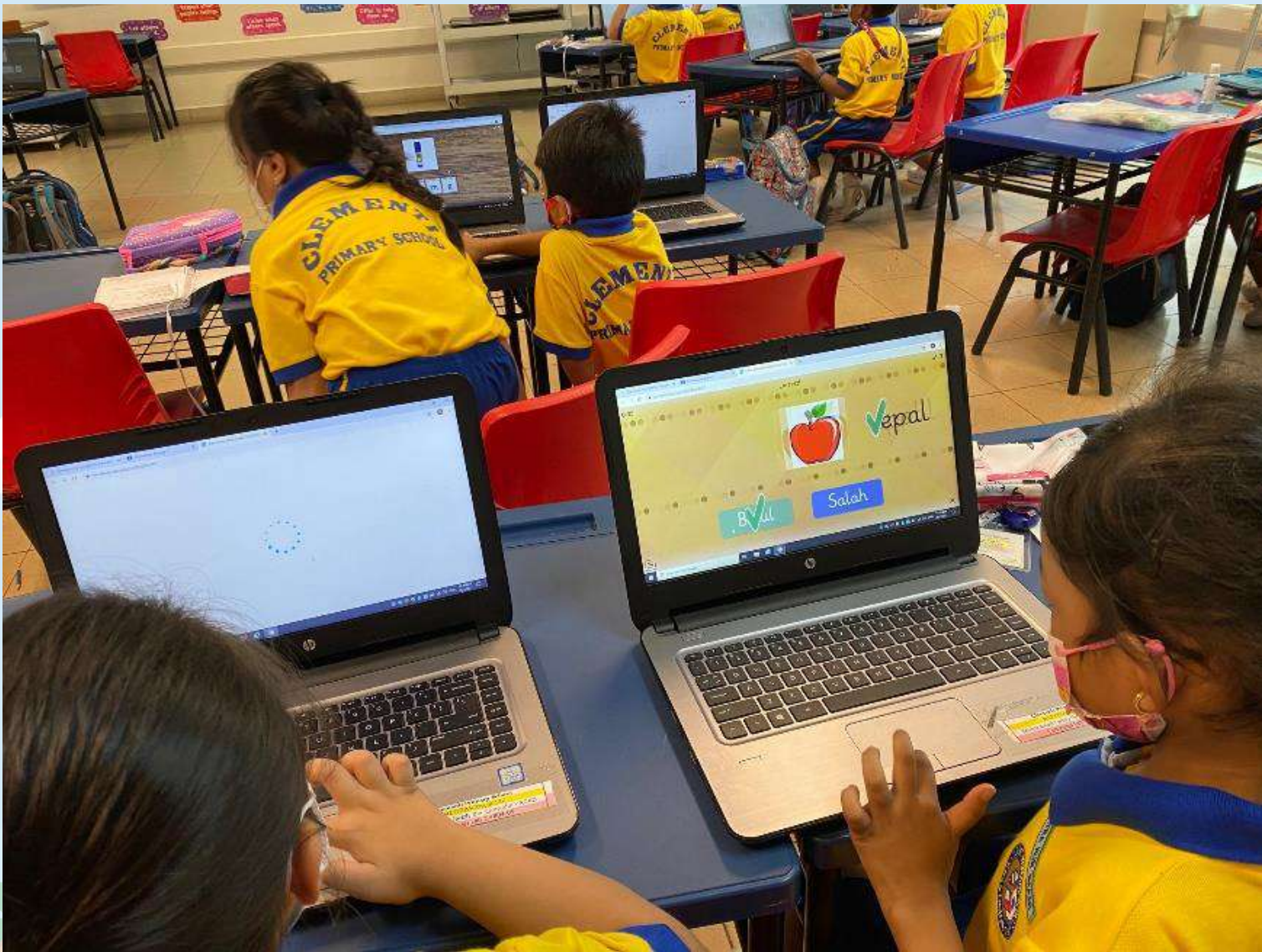
- Let others go ahead.
- Respect other people's feelings.
- Listen when others speak.
- Take turns.
- Raise your hand to speak.



A Leader. A Keen Learner. A Friend.

Integrity • Respect • Excellence





A Leader. A Keen Learner. A Friend.

Integrity • Respect • Excellence





A Leader. A Keen Learner. A Friend.

Integrity • Respect • Excellence

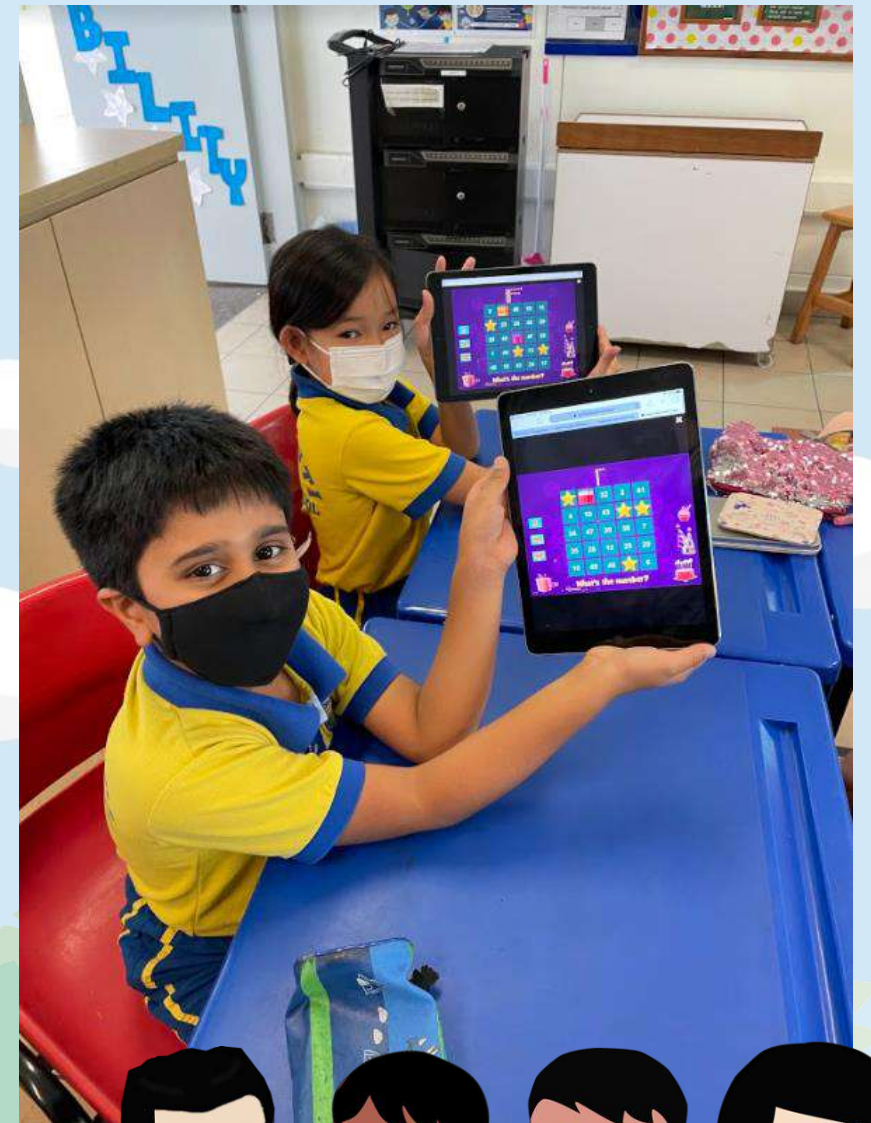




A Leader. A Keen Learner. A Friend.

Integrity • Respect • Excellence





A Leader. A Keen Learner. A Friend.

Integrity • Respect • Excellence



SAFETY AND SECURITY MATTERS

A Leader. A Keen Learner. A Friend. *Integrity • Respect • Excellence*



REPORTING FOR SCHOOL



School starts on

Tuesday, 4 January 2022

All pupils are to assemble in school by 7.30 a.m.

A Leader. A Keen Learner. A Friend.

Integrity • Respect • Excellence



SCHOOL DISMISSAL

P1 Clementians enrolled in Kidz Treehouse (SCC)	Clementians will assemble in the Indoor Sports Hall and handed over to the SCC teachers who will be there to take attendance.
P1 Clementians taking the school bus	Clementians will assemble in the School Hall and then led by the Bus Aunties to the respective buses.
All other P1 Clementians	Clementians will be dismissed at the School Foyer at staggered timings. For parents/guardian entering the school premise, SafeEntry is required. <ul style="list-style-type: none">• 1.25 – 1.40 p.m. → on foot• 2.00 p.m. → for vehicles



STAGGERED DISMISSAL PLAN FOR P1 – P6 CLEMENTIANS



Dismissal Time:

1.30 p.m.

Classes

Dismissal Point

1 Empathy, 1 Perseverance & 1 Confidence

Foyer (Left Side)

2 Empathy, 2 Perseverance & 2 Teamwork

Foyer (Right Side)

3 Confidence & 3 Teamwork

Gate 4

4 Responsibility

Gate 4

5 Empathy & 5 Perseverance

Gate 9

6 Confidence

Gate 9

Dismissal Time:

1.35 p.m.

Classes

Dismissal Point

1 Initiative, 1 Sincerity & 1 Teamwork

Foyer (Left Side)

2 Confidence, 2 Sincerity & 2 Responsibility

Foyer (Right Side)

3 Initiative

Gate 4

4 Initiative & 4 Empathy

Gate 4

5 Confidence

Gate 9

6 Empathy & 6 Perseverance

Gate 9

Dismissal
Time:

1.40 p.m.

Classes

Dismissal Point

1 Responsibility, 1 Enthusiasm and 1 Unity

Foyer (Left Side)

2 Initiative & 2 Enthusiasm

Foyer (Right Side)

3 Responsibility & 3 Perseverance

Gate 4

4 Confidence

Gate 4

5 Responsibility & 5 Teamwork

Gate 9

6 Responsibility

Gate 9

Dismissal
Time:

1.45 p.m.

Classes

Dismissal Point

3 Empathy

Gate 4

4 Perseverance & 4 Teamwork

Gate 4

5 Initiative

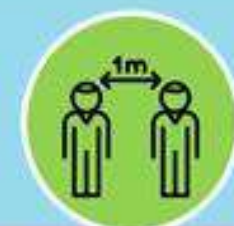
Gate 9

6 Initiative & 6 Teamwork

Gate 9



Put your mask
on at all times.



Practise social
distancing.

Remember to check
in and out of Safe Entry
by scanning the QR
Code on the left.

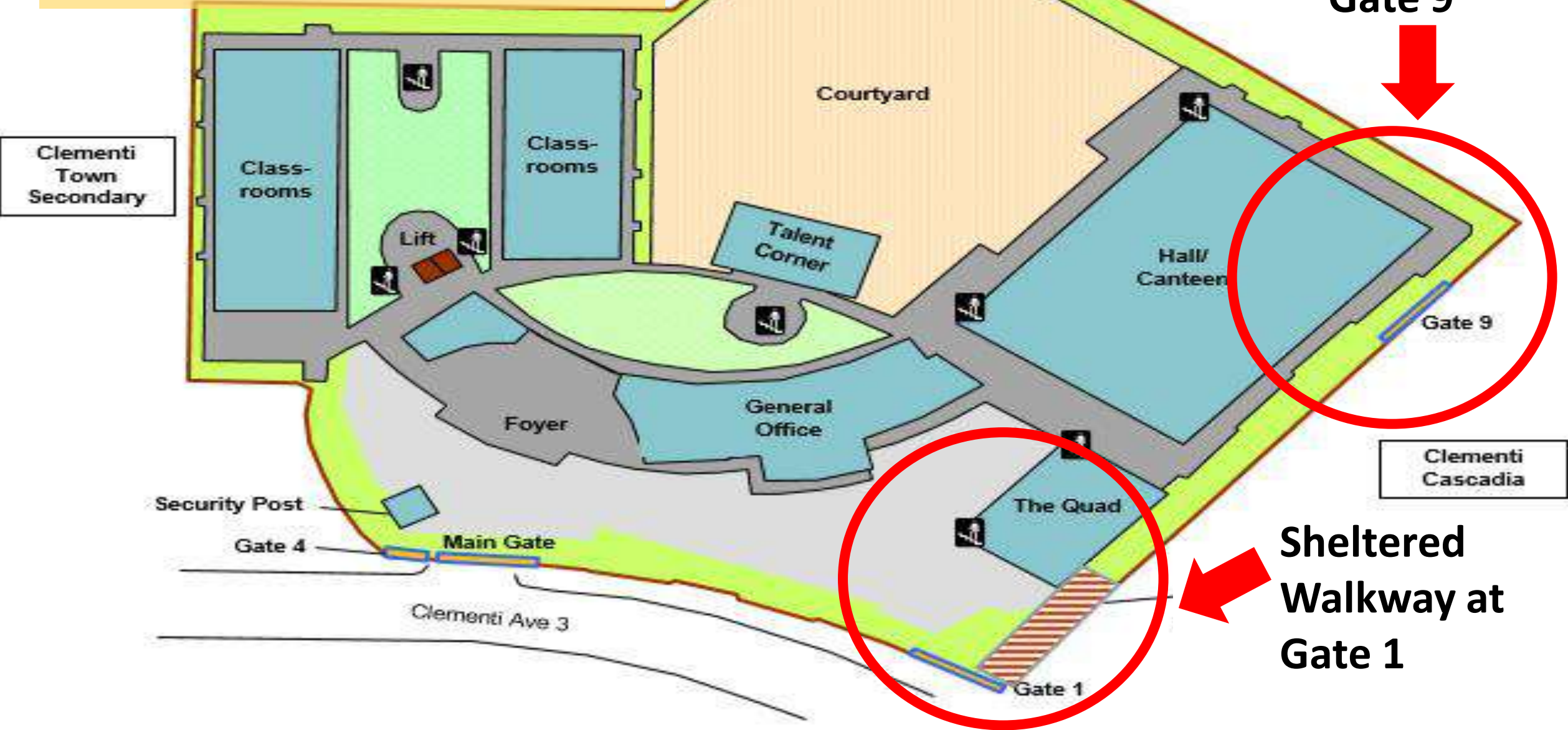
Parents/Guardian,
please arrive at the
dismissal point 10
minutes before the
dismissal time.

<https://bit.ly/CTPSE2020>

**TOGETHER
A STRONGER SINGAPORE
NDP 2020**



SCHOOL LAYOUT



SIDE GATES – GATE 1 & GATE 9



Gate 1



Gate 9
(Clementi Cascadia)

**Before
curriculum
hours**

6.30 a.m. to 7.25
a.m.

**After
curriculum
hours**

1.30 p.m. to 2.00
p.m.



A Leader. A Keen Learner. A Friend.

Integrity • Respect • Excellence

GATE 4 – WITH COVERED WALKWAY



A Leader. A Keen Learner. A Friend.

Integrity • Respect • Excellence



SIDE GATES — GATE 4



Gate 4

(pedestrian covered walkway)

Before curriculum hours

6.30 a.m. to 7.25 a.m.

After curriculum hours

1.30 p.m. to 2.00 p.m.

Note:

- Gate 4 is for Clementians, School Staff, Parents/Guardian & Members of the Public
- SafeEntry & Security Clearance is required



A Leader. A Keen Learner. A Friend.

Integrity • Respect • Excellence

DROP-OFF POINT FOR VEHICLES



School foyer can accommodate **four** vehicles.



A Leader. A Keen Learner. A Friend.

Integrity • Respect • Excellence



VISITORS

- Should you need to see your child for urgent matters, **please report to the Security Post** at the gate.
- **Inform** the security guard regarding **purpose** of visit.
- Scan **TraceTogether**, **take your temperature** and collect a **Visitor's Pass** from the security guard for identification.
- The security guard will direct you to the General Office for assistance.

A Leader. A Keen Learner. A Friend.

Integrity • Respect • Excellence



CURRICULUM MATTERS

A Leader. A Keen Learner. A Friend. *Integrity • Respect • Excellence*



OVERVIEW

1 Aims of Primary Education

2 Developments in Primary Education

3 What is it like in school?

6 School-Home Partnership

4 Preparing for school

5 Transiting to Primary 1



AIMS OF PRIMARY EDUCATION



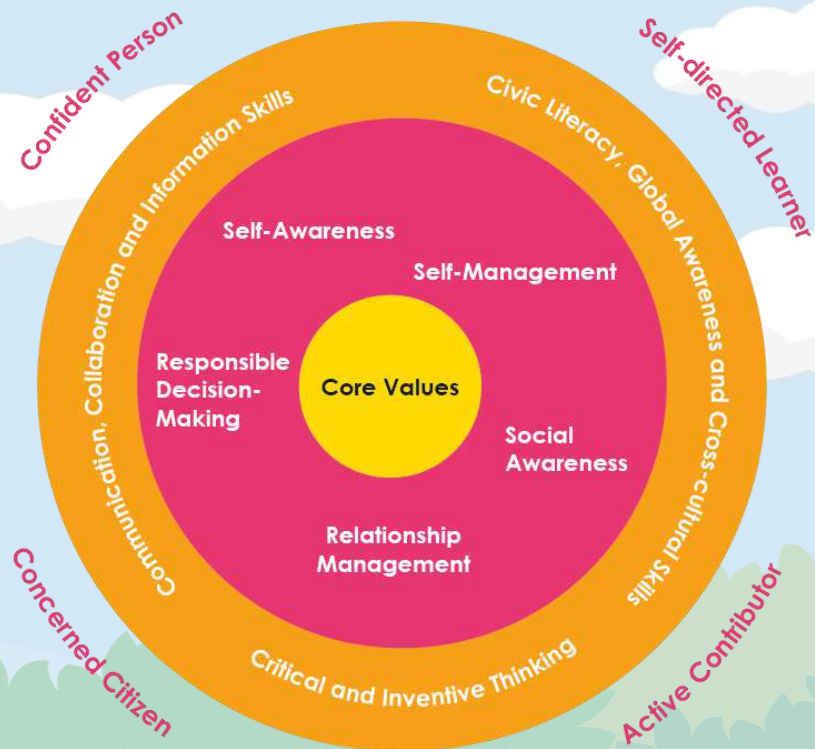
- Lay a strong foundation
- Nurture well-rounded individuals and passionate lifelong learners
- Prepare the child for the future

A Leader. A Keen Learner. A Friend.

Integrity • Respect • Excellence



WE WANT OUR CHILDREN TO BE...



CONFIDENT

**ACTIVE
CONTRIBUTORS**

**SELF-DIRECTED
LEARNERS**

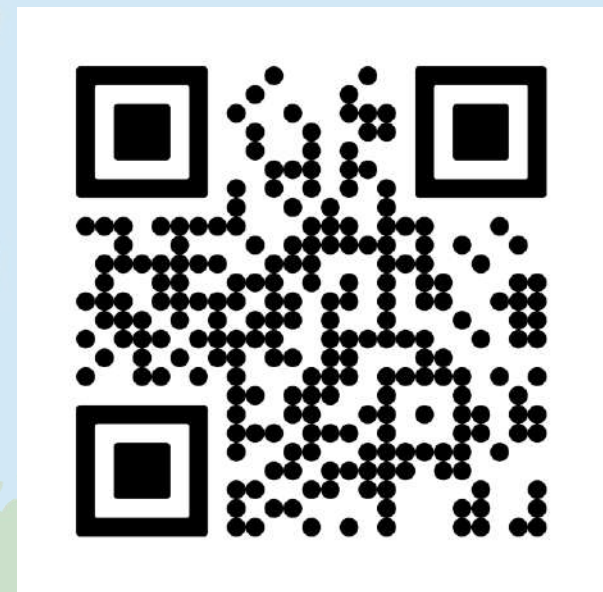
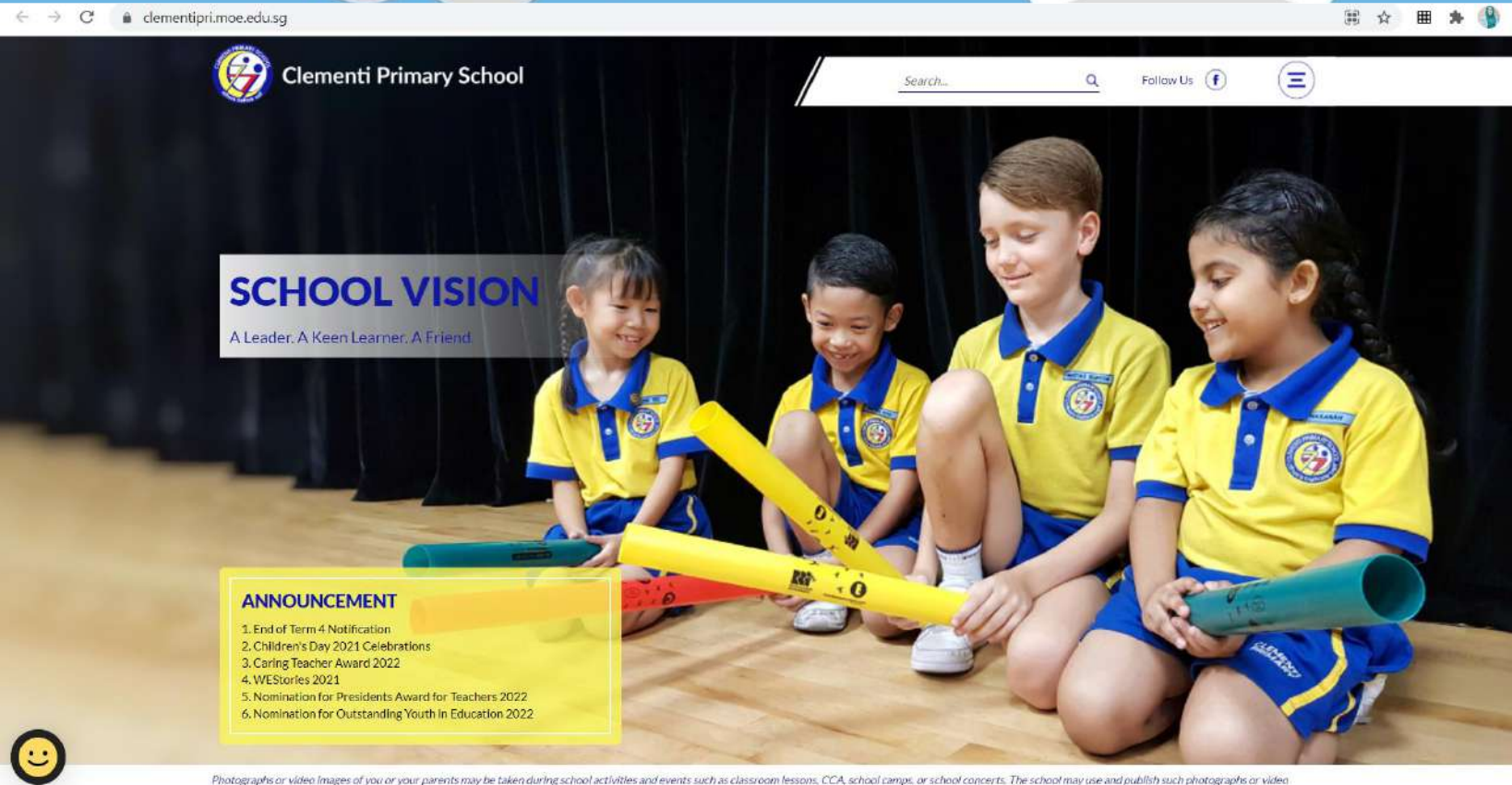
**CONCERNED
CITIZENS**

A Leader. A Keen Learner. A Friend.

Integrity • Respect • Excellence



Our School Website



A Leader. A Keen Learner. A Friend.

Integrity • Respect • Excellence





PARENTS INFO

- Principal's Message
- School Vision, Mission & Values
- School Information
- Our People
- Parenting Tips
- Notifications
- Partners
- Forms

CONTACT US

- Feedback to Us

SIX-YEAR JOURNEY OF A CLEMENTIAN

- Lower Primary
- Middle Primary
- Upper Primary
- Character & Citizenship Education
- Memorable School Events

SIGNATURE PROGRAMMES IN CTP

- Applied Learning Programme
- Learning For Life Programme
- After School Programmes

PAL & CCA

- PAL
- CCA





Home > Parents Info > Notifications > Primary 1

Notification Letters

Primary 1

Primary 2

Primary 3

Primary 4

Primary 5

Primary 6

PRIMARY 1

2022

1. [P1 Booklist 2022](#)

2021

1. [Welcome talk by School Leaders](#)
2. [SLS \(Student Learning Space\) and GC \(Google Classroom\) accounts](#)
3. [P1 Programme for 4 January](#)
4. HPB Letter on School Health & Dental Visits
5. Parents Support Group Notification for P1 Parents
6. P1 E-Orientation day 2020 (Presentation)
7. P1 E-Orientation day 2020 (Tour)
8. P1 Information sheet for parents
9. Parent Kit - Preschool to Primary School transition
10. POSB Smart Buddy watch registration
11. Registration to Parents Gateway
12. [P1 Booklist 2021](#)
13. [Kids Treehouse Brochure](#)

2020

1. [Important Notice to Year 2021 Primary One](#)
2. [Update on P1 level activities](#)



SCHOOL LIFE @ CTP

Experiential



Enjoyable



Engaging



A Leader. A Keen Learner. A Friend.

Integrity • Respect • Excellence



SCHOOL LIFE @ CTP

Enquiry-based



Encouraging



Enriching



A Leader. A Keen Learner. A Friend.

Integrity • Respect • Excellence



COMMUNICATION WITH TEACHERS

Communicating with your child's teachers

- Have regular conversations with teachers in both academic and non-academic areas — this will help you better guide your child's development.
- Ask the teacher for the best way and time to contact them.



A Leader. A Keen Learner. A Friend.

Integrity • Respect • Excellence



APPOINTMENT WITH A TEACHER

A message could be left with the office staff at
6779 7449 (General Office)
for the teacher to return the call when he/she is
available.



You could also communicate with the teacher via email.
School email address: admin_clementi_ps@moe.edu.sg
School Website: <http://www.clementipri.moe.edu.sg/>

A Leader. A Keen Learner. A Friend. *Integrity • Respect • Excellence*



ABSENCE FROM SCHOOL

- Absence from school **must be supported by a doctor's MC.**
- Parents are advised not to take their children out of school during term time.
- Request for absence during term time must be made to **the Form Teacher** in advance.
- If you would like to take your child/ward home before school dismissal, parents/guardian must sign him/her out at the General Office.



SCHOOL SUPPORT

School Counsellor

Ms Jaya

AED/Learning & Behavioural Support

Ms Serita Rai
Mdm Nadiah

Special Educational Needs

Mdm Cynthia Lim (ST/SEN)

Financial Assistance

Ms Joyce Quek (Admin Manager)

A Leader. A Keen Learner. A Friend.

Integrity • Respect • Excellence



PREPARING YOUR CHILD FOR PRIMARY 1

A Leader. A Keen Learner. A Friend. *Integrity • Respect • Excellence*



CURRICULUM HOURS

	School Hours	Recess Time	Fruit & Snack Time
Monday, Wednesday, Thursday and Friday	7.30 a.m. to 1.30 p.m.	8.30 a.m. to 9.00 a.m.	12 noon
Tuesday		8.45 a.m. to 9.15 a.m.	11.45 a.m.

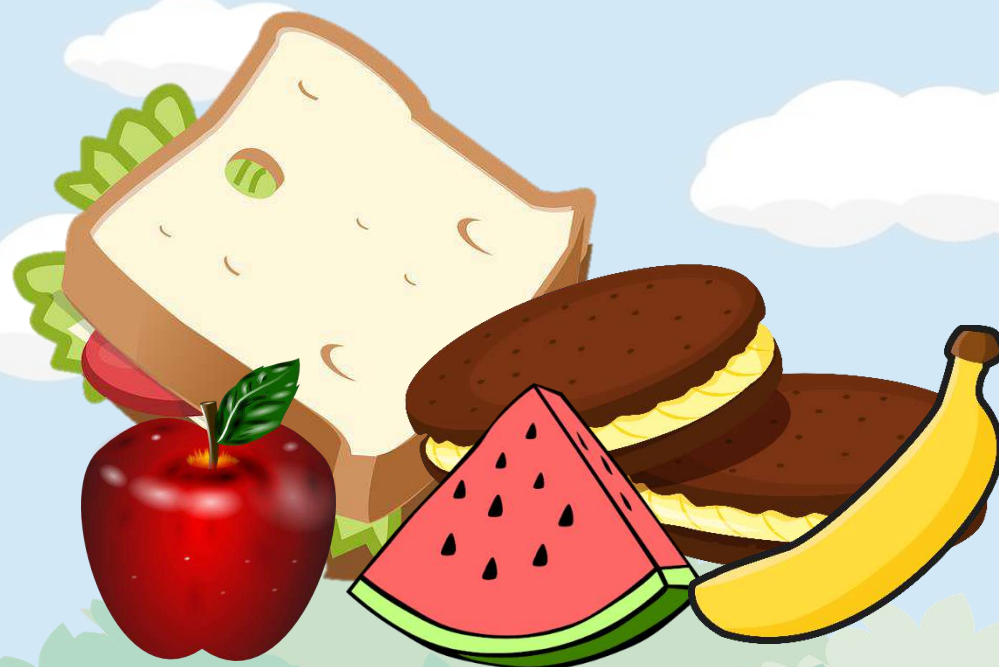
A Leader. A Keen Learner. A Friend.

Integrity • Respect • Excellence



FRUIT & SNACK TIME

Fruit & Snack Time	
Monday, Wednesday, Thursday and Friday	12 noon
Tuesday	11.45 a.m.



A Leader. A Keen Learner. A Friend.

Integrity • Respect • Excellence

FIRST DAY PROGRAMME (TENTATIVE)

No.	Time	Activity	Venue
1	6.40 a.m. to 7.25 a.m.	Arrival of P1 Clementians (parents are not allowed into the school until 8.30 a.m.)	Lift Lobby, School Foyer
2	8.30 a.m. to 9.15 a.m.	1 Initiative, 1 Responsibility & 1 Empathy	Recess
		1 Sincerity, 1 Perseverance & 1 Enthusiasm	Welcome Talk by SLs
		1 Confidence, 1 Teamwork and 1 Unity	PSG Engagement
3	9.15 a.m. to 10.00 a.m.	1 Sincerity, 1 Perseverance & 1 Enthusiasm	Recess
		1 Confidence, 1 Teamwork and 1 Unity	Welcome Talk by SLs
		1 Initiative, 1 Responsibility & 1 Empathy	PSG Engagement
4	10.00 a.m. to 10.45 a.m.	1 Confidence, 1 Teamwork and 1 Unity	Recess
		1 Initiative, 1 Responsibility & 1 Empathy	Welcome Talk by SLs
		1 Sincerity, 1 Perseverance & 1 Enthusiasm	PSG Engagement

Recess: Canteen
Welcome Talk: School Hall
PSG Engagement: Library

Note: More details will be communicated to parents/guardians by 23 December 2021.

THINGS TO BRING

First Day of School

- A lightweight school bag
- A working TraceTogether token
- Pencil case and Colour pencils
- Story book
- Plastic whiteboard set
(whiteboard, marker, duster)

English Language

1. STELLAR Handwriting Book
2. A5 Broad Line Exercise Book

Mathematics

1. Primary Mathematics Textbook 1A
2. Primary Mathematics Practice Book 1A

***Please refer to the P1 Orientation Information Sheet on the school website for more information.**

A Leader. A Keen Learner. A Friend.

Integrity • Respect • Excellence



NAME/CLASS TAGS



Pupils are to report in their **school uniform** and **put on their name tags** for the month of **January**.

Parents are to write the following on the reverse side of the name tag if their child is taking the school transport:

- Child's name and class
- Address
- Contact number
- School bus number

A Leader. A Keen Learner. A Friend.

Integrity • Respect • Excellence



SCHOOL UNIFORM

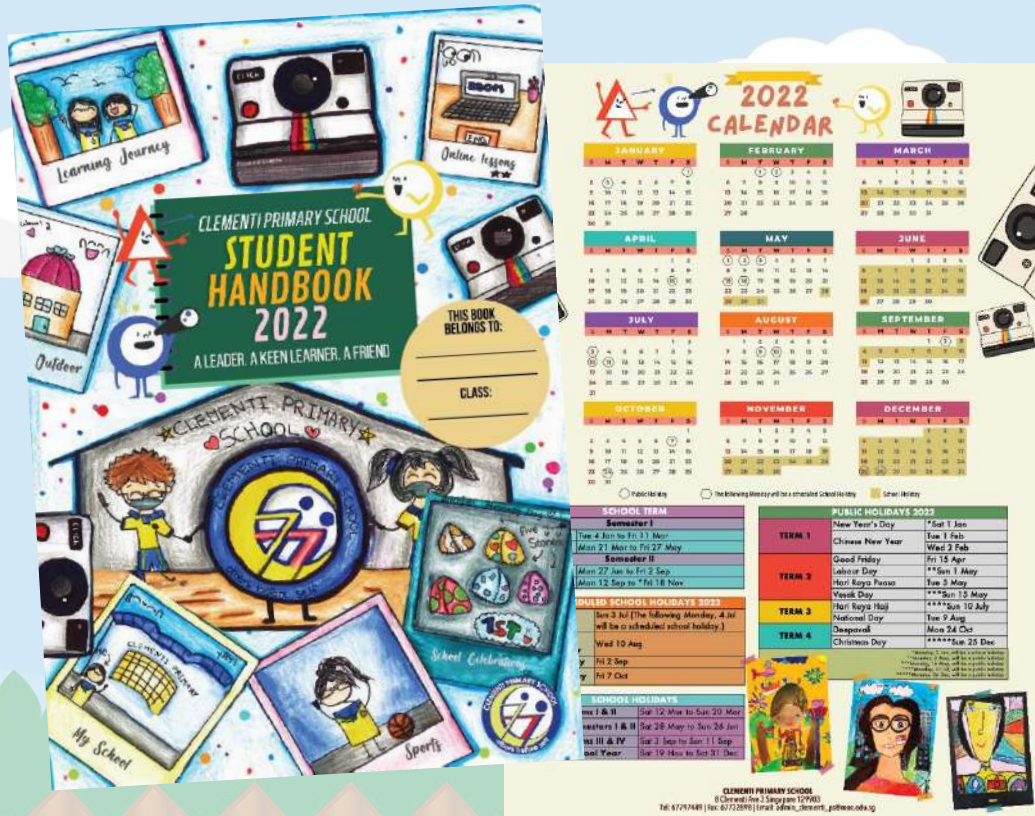


- School T-shirt: made of honeycomb material (60% polyester, 40% cotton)
- Breathable material and only light ironing is required

A Leader. A Keen Learner. A Friend. Integrity • Respect • Excellence



STUDENT HANDBOOK



- The handbook is given to all Clementians on the first day of school. Each Clementian is given a **complimentary** copy.
- Please ensure that the Personal Information page is filled up by **Wednesday, 5 January 2022**.
- The school rules can be found in the Pupil Handbook and are to be observed at all times.



A Leader. A Keen Learner. A Friend.

Integrity • Respect • Excellence

SCHOOL UNIFORM

Tuesday

Wear school uniform to school for morning flag-raising. Bring PE attire to school if child has Physical Education (PE) or Health Education (HE) lessons.

(Teachers will guide Clementians to change into PE attire during recess if PE/HE is after recess, or change during PE/HE lessons if lessons are before recess. PE lessons will be scheduled on other days where possible.)

Monday, Wednesday, Thursday and Friday

Wear PE attire

A Leader. A Keen Learner. A Friend.

Integrity • Respect • Excellence



RECESS



- Recess will be **30 minutes long daily.**

**Monday,
Wednesday,
Thursday and Friday**

8.30 – 9.00 a.m.

Tuesday

8.45 – 9.15 a.m.

A Leader. A Keen Learner. A Friend. *Integrity • Respect • Excellence*



RECESS



Clementians can purchase food and drinks using the following payment methods:

- Cash
- EZ-link Card
- POSB Smart Buddy Watch

A Leader. A Keen Learner. A Friend. *Integrity • Respect • Excellence*



POSB SMART BUDDY



A Leader. A Keen Learner. A Friend.

Integrity • Respect • Excellence



POSB SMART BUDDY



- Your child will be able to make payments at the school bookshop, canteen and selected merchants outside of school using the SMART Buddy watch.
- You will be able to pre-set your child's daily allowance, and monitor their expenses and savings conveniently with a mobile app.
- They can check their allowance by scanning their smart buddy watch at two locations in the canteen.

A Leader. A Keen Learner. A Friend.

Integrity • Respect • Excellence



TRANSITING TO PRIMARY 1

A smooth transition is made when your child...

Feels safe and comfortable in their new environment

Is able to manage the daily challenges of school life

A Leader. A Keen Learner. A Friend.

Integrity • Respect • Excellence



PREPARING MY CHILD FOR P1



Relating to Others

Developing Good Habits

Nurturing Positive Learning Attitude

Creating a conducive learning environment at home

A Leader. A Keen Learner. A Friend.

Integrity • Respect • Excellence



MOE SUPPORT NETWORK

MOE website

On latest announcements, policies and data

www.moe.gov.sg

Schoolbag.sg

Through articles and multimedia content, Schoolbag provide parents and general public with information and insights related to education, tips for parent involvement and features on school programmes.

www.schoolbag.sg

MOE on Facebook

www.facebook.com/moesingapore

MOE on Twitter

www.twitter.com/#!/MOEsg

MOE on YouTube

www.youtube.com/moespore

MOE on Instagram

www.instagram.com/moesingapore

A Leader. A Keen Learner. A Friend.

Integrity • Respect • Excellence



Q & A SESSION

A Leader. A Keen Learner. A Friend. *Integrity • Respect • Excellence*



THANK YOU

A Leader. A Keen Learner. A Friend. *Integrity • Respect • Excellence*

