

# P1 e-ORIENTATION DAY 2020

FRIDAY, 20 NOVEMBER 2020

A Leader. A Keen Learner. A Friend. *Integrity • Respect • Excellence*



# PROGRAMME

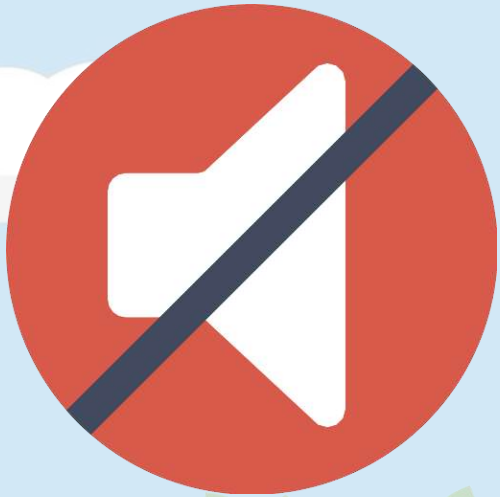
08.45 am	Parents/Guardians and P1 Clementians joining the Webinar
09.00 am	Introduction by AYH/Lower Primary
09.05 am	Welcome Address by Principal
09.10 am	Briefing on General Matters by Vice-Principals and Assistant Year Head
09.40 am	Q & A Segment
10.00 am	Breakout session into Form Classes
11.00 am	End of P1 e-Orientation Day 2020

A Leader. A Keen Learner. A Friend.

*Integrity • Respect • Excellence*



# HOUSEKEEPING MATTERS



All microphones are muted during the Webinar.



All cameras are disabled during the Webinar.



You may use the chat function to ask questions.

A Leader. A Keen Learner. A Friend.

*Integrity • Respect • Excellence*



# Our School Website

clementipri.moe.edu.sg



Clementi Primary School

Search...



Follow Us



## SCHOOL VISION

A Leader. A Keen Learner. A Friend.

### ANNOUNCEMENT

1. End of Term 4 Parent Notification 2020
2. Webinar with Principal 28 Oct 2020
3. Outstanding Youths in Education nomination 2021
4. Presidents Awards for Teachers nomination 2021
5. Children's Day Notification 2020
6. ECHA nomination letter for parents



## PARENTS INFO

- Principal's Message
- School Vision, Mission & Values
- School Information
- Our People
- Parenting Tips
- Notifications
- Partners
- Forms

## CONTACT US

- Feedback to Us

## SIX-YEAR JOURNEY OF A CLEMENTIAN

- Lower Primary
- Middle Primary
- Upper Primary
- Character & Citizenship Education
- Memorable School Events

## SIGNATURE PROGRAMMES IN CTP

- Applied Learning Programme
- Learning For Life Programme
- After School Programmes

## PAL & CCA

- PAL
- CCA





Home > Parents Info > Notifications > Primary 1

Notification Letters

Primary 1

Primary 2

Primary 3

Primary 4

Primary 5

Primary 6

## PRIMARY 1

### 2021

1. [Kids Treehouse Brochure](#)
2. [Registration to Parents Gateway](#)

### 2020

1. [Important Notice to Year 2021 Primary One](#)
2. [Update on P1 level activities](#)
3. Google Classroom and SLS letter to parents
4. [P1 and P2 Learning Mathematics Beyond Classroom](#)
5. Back to School Day
6. Welcome talk for P1 parents by SLS
7. [Parenting Talk - Giving them a headstart](#)
8. P1 Orientation Sheet 2020
9. P1 Orientation Day Presentation Slides
10. [P1 Booklist 2020](#)

### 2019

1. [P1 & P2 in conversation with Principal slides](#)
2. [Google Classroom & SLS Letter to P1 Parents](#)
3. [Letter to parents - Back to school day](#)
4. [Briefing slide for P1 Parents - 2019](#)



# SAFETY AND SECURITY MATTERS

A Leader. A Keen Learner. A Friend. *Integrity • Respect • Excellence*



# REPORTING FOR SCHOOL



School starts on

**Monday, 4 January 2021**

All pupils are to assemble in school by 7.30 a.m.

A Leader. A Keen Learner. A Friend.

*Integrity • Respect • Excellence*





# SCHOOL DISMISSAL

<b>P1 Clementians enrolled in Kidz Treehouse (SCC)</b>	Clementians will assemble in the Indoor Sports Hall and handed over to the SCC teachers who will be there to take attendance.
<b>P1 Clementians taking the school bus</b>	Clementians will assemble in the School Hall and then led by the Bus Aunties to the respective buses.
<b>All other P1 Clementians</b>	Clementians will be dismissed at the School Foyer at staggered timings. For parents/guardian entering the school premise, SafeEntry is required. <ul style="list-style-type: none"><li>• 1.25 – 1.40 p.m. → on foot</li><li>• 2.00 p.m. → for vehicles</li></ul>



# STAGGERED DISMISSAL PLAN FOR P1 – P6 CLEMENTIANS 2021



Dismissal  
Time:

**1.30 p.m.**

**Classes**

**Dismissal Point**

1 Empathy, 1 Perseverance & 1 Confidence

Foyer (Left Side)

2 Empathy, 2 Perseverance & 2 Teamwork

Foyer (Right Side)

3 Confidence & 3 Teamwork

Gate 4

4 Responsibility

Gate 4

5 Empathy & 5 Perseverance

Gate 9

6 Confidence

Gate 9

Dismissal  
Time:

**1.35 p.m.**

**Classes**

**Dismissal Point**

1 Initiative, 1 Sincerity & 1 Teamwork

Foyer (Left Side)

2 Confidence, 2 Sincerity & 2 Responsibility

Foyer (Right Side)

3 Initiative

Gate 4

4 Initiative & 4 Empathy

Gate 4

5 Confidence

Gate 9

6 Empathy & 6 Perseverance

Gate 9

Dismissal  
Time:

**1.40 p.m.**

**Classes**

**Dismissal Point**

1 Responsibility & 1 Enthusiasm

Foyer (Left Side)

2 Initiative & 2 Enthusiasm

Foyer (Right Side)

3 Responsibility & 3 Perseverance

Gate 4

4 Confidence

Gate 4

5 Responsibility & 5 Teamwork

Gate 9

6 Responsibility

Gate 9

Dismissal  
Time:

**1.45 p.m.**

**Classes**

**Dismissal Point**

3 Empathy

Gate 4

4 Perseverance & 4 Teamwork

Gate 4

5 Initiative

Gate 9

6 Initiative & 6 Teamwork

Gate 9



Put your mask  
on at all times.



Practise social  
distancing.

Remember to check  
in and out of Safe Entry  
by scanning the QR  
Code on the left.

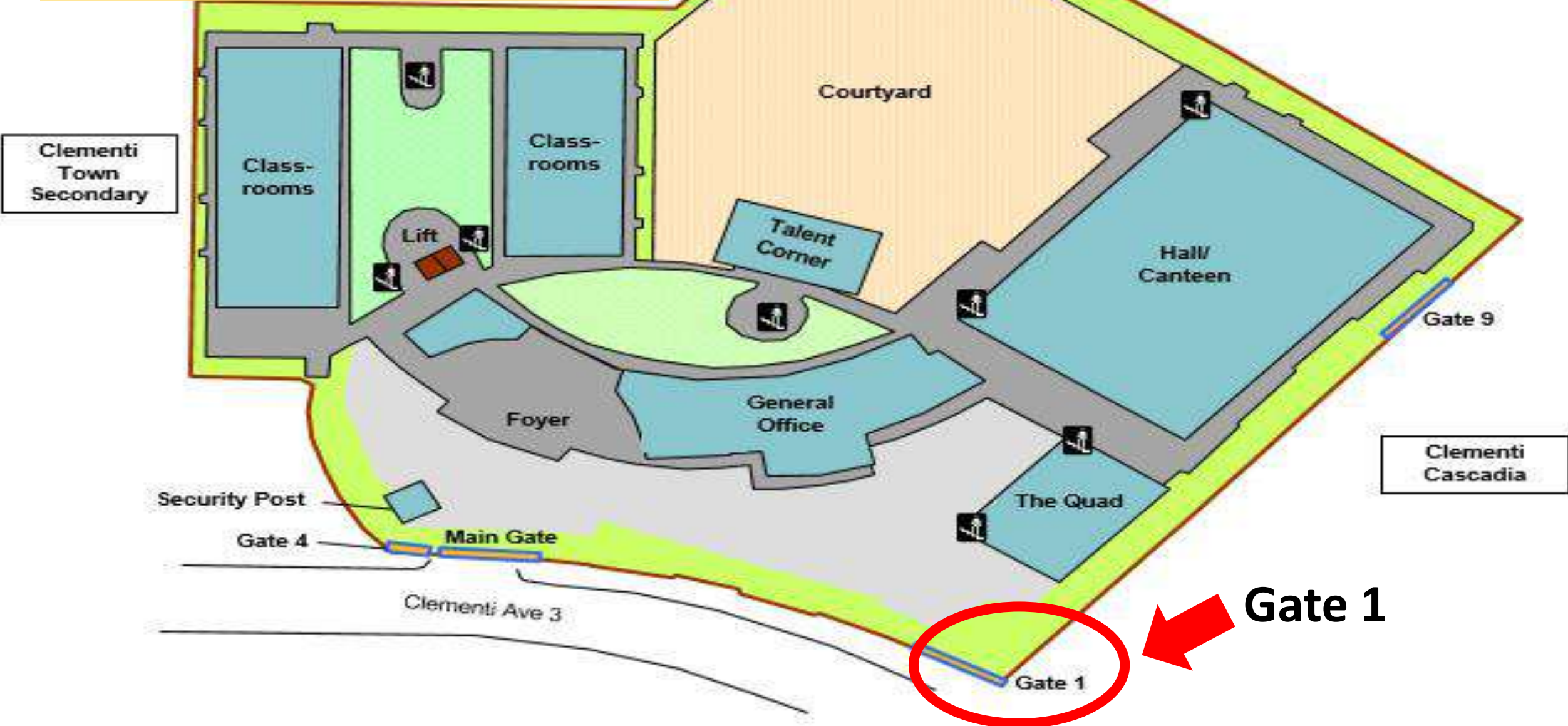
Parents/Guardian,  
please arrive at the  
dismissal point 10  
minutes before the  
dismissal time.

<https://bit.ly/CTPSE2020>

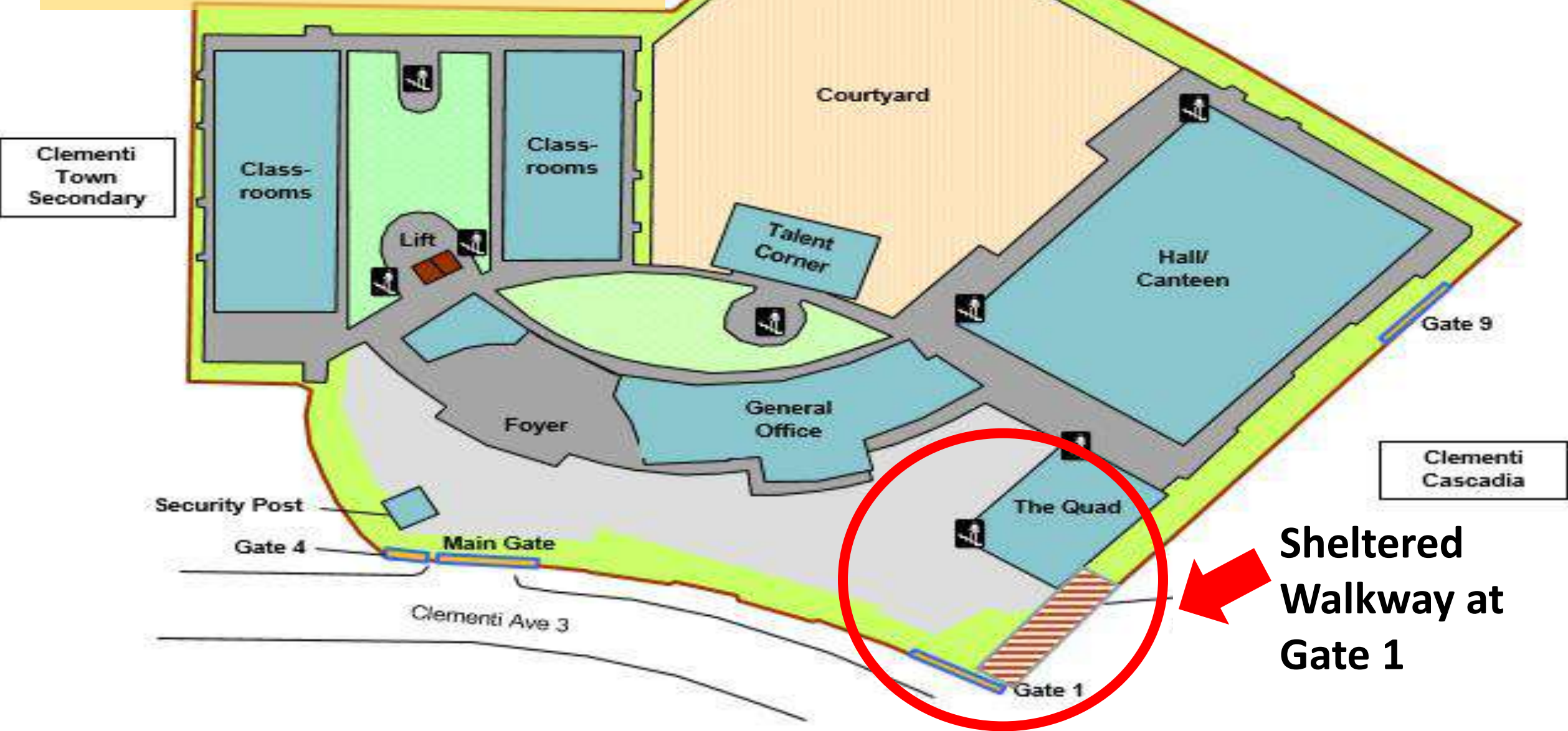
TOGETHER  
A STRONGER SINGAPORE  
NDP 2020



# SCHOOL LAYOUT



# SCHOOL LAYOUT



# SIDE GATES – GATE 1



Gate 1

**Before curriculum hours**

6.30 a.m. to 7.25 a.m.

**After curriculum hours**

1.30 p.m. to 2.00 p.m.

**Note:**

- Gate 1 will be closed from 21 November 2020 to Mid-February 2021
- Gate 1 can only be used by Clementians and school staff



A Leader. A Keen Learner. A Friend.

*Integrity • Respect • Excellence*

# SIDE GATES — GATE 4



**Gate 4**

(pedestrian covered walkway)

**Before curriculum hours**

6.30 a.m. to 7.25 a.m.

**After curriculum hours**

1.30 p.m. to 2.00 p.m.

**Note:**

- Gate 4 is for Clementians, School Staff, Parents/Guardian & Members of the Public
- SafeEntry & Security Clearance is required



**A Leader. A Keen Learner. A Friend.**

**Integrity • Respect • Excellence**

# SIDE GATES – GATE 9



## From school canteen to Clementi Cascadia

**Before curriculum hours**

6.45 a.m. to 7.25 a.m.

**After curriculum hours**

1.30 p.m. to 2.00 p.m.

**Note:**

- Gate 9 can only be used by Clementians and school staff

A Leader. A Keen Learner. A Friend.

*Integrity • Respect • Excellence*





# GATE 4 – WITH COVERED WALKWAY



A Leader. A Keen Learner. A Friend.

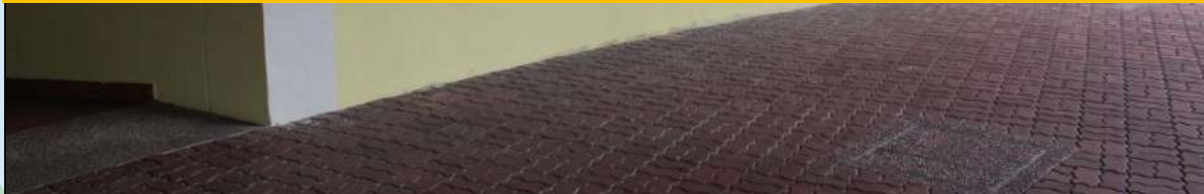
*Integrity • Respect • Excellence*



# DROP-OFF POINT FOR VEHICLES



School foyer can accommodate **four** vehicles.



A Leader. A Keen Learner. A Friend.

*Integrity • Respect • Excellence*



# VISITORS

- Should you need to see your child for urgent matters, **please report to the Security Post** at the gate.
- **Inform** the security guard regarding **purpose** of visit.
- Scan **SafeEntry**, **take your temperature** and collect a **Visitor's Pass** from the security guard for identification.
- The security guard will direct you to the General Office for assistance.

A Leader. A Keen Learner. A Friend.

*Integrity • Respect • Excellence*



# CURRICULUM MATTERS

A Leader. A Keen Learner. A Friend. *Integrity • Respect • Excellence*



# OVERVIEW

**1** Aims of Primary Education

**2** Developments in Primary Education

**3** What is it like in school?

**6** School-Home Partnership

**4** Preparing for school

**5** Transiting to Primary 1



# AIMS OF PRIMARY EDUCATION



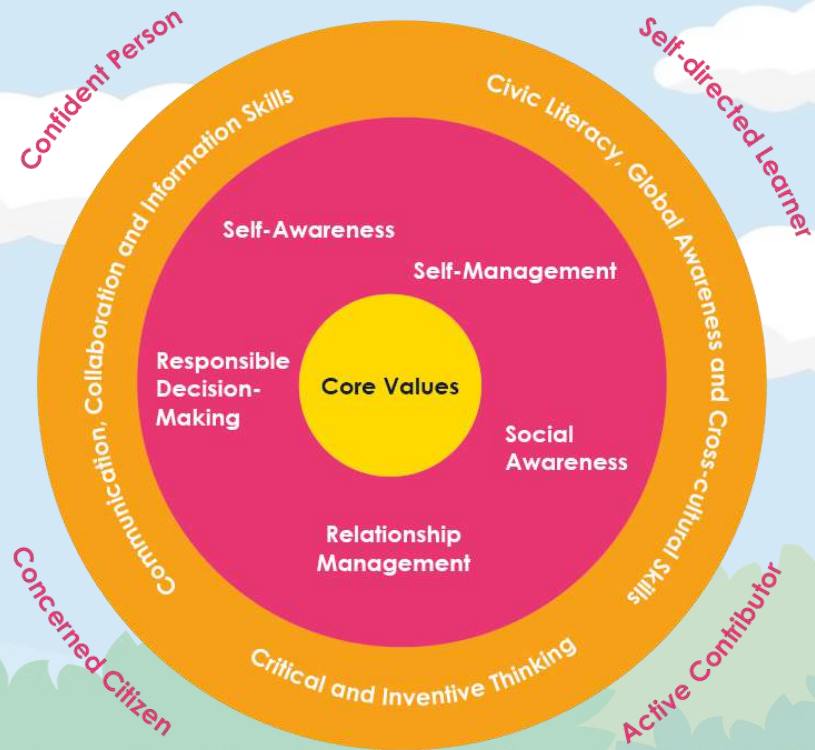
- Lay a strong foundation
- Nurture well-rounded individuals and passionate lifelong learners
- Prepare the child for the future

A Leader. A Keen Learner. A Friend.

*Integrity • Respect • Excellence*



# WE WANT OUR CHILDREN TO BE...



**CONFIDENT**


**ACTIVE  
CONTRIBUTORS**

**SELF-DIRECTED  
LEARNERS**

**CONCERNED  
CITIZENS**

**A Leader. A Keen Learner. A Friend.** *Integrity • Respect • Excellence*



A close-up shot of a woman with short dark hair and glasses, wearing a pink shirt. She has her eyes closed and a slightly open mouth, as if she is speaking or listening intently. The background is blurred, showing what appears to be a bookshelf with various books.

and then we came early to school to learn it, that would be considered an ECA.



# SCHOOL LIFE @ CTP

## Experiential



## Enjoyable



## Engaging



A Leader. A Keen Learner. A Friend.

*Integrity • Respect • Excellence*



# SCHOOL LIFE @ CTP

## Enquiry-based



## Encouraging



## Enriching



A Leader. A Keen Learner. A Friend.

*Integrity • Respect • Excellence*



# COMMUNICATION WITH TEACHERS

## Communicating with your child's teachers

- Have regular conversations with teachers in both academic and non-academic areas — this will help you better guide your child's development.
- Ask the teacher for the best way and time to contact them.



A Leader. A Keen Learner. A Friend.

*Integrity • Respect • Excellence*



# APPOINTMENT WITH A TEACHER

A message could be left with the office staff at  
**6779 7449 (General Office)**  
for the teacher to return the call when he/she is  
available.



You could also communicate with the teacher via email.  
School email address: [admin\\_clementi\\_ps@moe.edu.sg](mailto:admin_clementi_ps@moe.edu.sg)  
School Website: <http://www.clementipri.moe.edu.sg/>

A Leader. A Keen Learner. A Friend.

*Integrity • Respect • Excellence*



# ABSENCE FROM SCHOOL

- Absence from school **must be supported by a doctor's MC.**
- Parents are advised not to take their children out of school during term time.
- Request for absence during term time must be made to **the Principal** through the Form Teacher at least two weeks in advance.
- If you would like to take your child/ward home before school dismissal, parents/guardian must sign him/her out at the General Office.



# SCHOOL SUPPORT

**School Counsellor**

Ms Jaya

**AED/Learning & Behavioural Support**

Ms Serita Rai  
Mdm Nadiah

**Special Educational Needs**

Mdm Cynthia Lim (ST/SEN)

**Financial Assistance**

Ms Joyce Quek (Admin Manager)

A Leader. A Keen Learner. A Friend. *Integrity • Respect • Excellence*



# PREPARING YOUR CHILD FOR PRIMARY 1

A Leader. A Keen Learner. A Friend. *Integrity • Respect • Excellence*



# CURRICULUM HOURS

	School Hours	Recess Time	Fruit & Snack Time
Monday, Wednesday, Thursday and Friday	7.30 a.m. to 1.30 p.m.	8.30 a.m. to 9.00 a.m.	12 noon
Tuesday		8.15 a.m. to 8.45 a.m.	11.45 a.m.

A Leader. A Keen Learner. A Friend.

*Integrity • Respect • Excellence*





# FIRST DAY PROGRAMME (TENTATIVE)

No.	Time	Activity	Venue
1	6.40 a.m. to 7.25 a.m.	<b>Arrival of P1 Clementians</b> (parents are not allowed into the school until 8.30 a.m.)	Lift Lobby School Foyer
2	8.30 a.m.	<b>Arrival of P1 parents</b> (parents will be ushered to the school canteen for observation of P1 Recess)	School Canteen
3	9.00 a.m.	<b>End of Recess</b>	School Canteen
4	9.00 – 11.30 a.m.	1. Welcome Talk by SLs 2. Tea Session with PSG 3. Parenting Talks	School Hall School Library Teaching Lab

**Note:** More details will be communicated to parents/guardian by 23 December 2020.

A Leader. A Keen Learner. A Friend.

*Integrity • Respect • Excellence*



# THINGS TO BRING

## First Day of School

- A lightweight school bag
- Pencil case
- Colour pencils
- Story book
- Plastic whiteboard set  
(whiteboard, marker, duster)

### English Language

1. STELLAR Handwriting Book
2. A5 Broad Line Exercise Book

### Mathematics

1. Primary Mathematics Textbook 1A
2. Primary Mathematics Practice Book 1A

**\*Please refer to the P1 Orientation Information Sheet on the school website for more information.**

A Leader. A Keen Learner. A Friend.

*Integrity • Respect • Excellence*



# NAME/CLASS TAGS



Pupils are to report in their **school uniform** and **put on their name tags** for the month of **January**.

Parents are to write the following on the reverse side of the name tag if their child is taking the school transport:

- Child's name and class
- Address
- Contact number
- School bus number

A Leader. A Keen Learner. A Friend.

*Integrity • Respect • Excellence*



# SCHOOL UNIFORM



- School T-shirt: made of honeycomb material (60% polyester, 40% cotton)
- Breathable material and only light ironing is required

A Leader. A Keen Learner. A Friend. *Integrity • Respect • Excellence*



# SCHOOL UNIFORM

**Tuesday**

Wear school uniform to school for morning flag-raising. Bring PE attire to school if child has Physical Education (PE) or Health Education (HE) lessons.

(Teachers will guide Clementians to change into PE attire during recess if PE/HE is after recess, or change during PE/HE lessons if lessons are before recess. PE lessons will be scheduled on other days where possible.)

**Monday, Wednesday,  
Thursday and Friday**

Wear PE attire

A Leader. A Keen Learner. A Friend. *Integrity • Respect • Excellence*



# TRANSITING TO PRIMARY 1

A smooth transition is made when your child...

Feels safe and comfortable in their new environment

Is able to manage the daily challenges of school life

A Leader. A Keen Learner. A Friend.

*Integrity • Respect • Excellence*



# PREPARING MY CHILD FOR P1



Relating to Others

Developing Good Habits

Nurturing Positive Learning Attitude

Creating a conducive learning environment at home

A Leader. A Keen Learner. A Friend.

*Integrity • Respect • Excellence*



# BREAKOUT SESSION WITH FACILITATORS

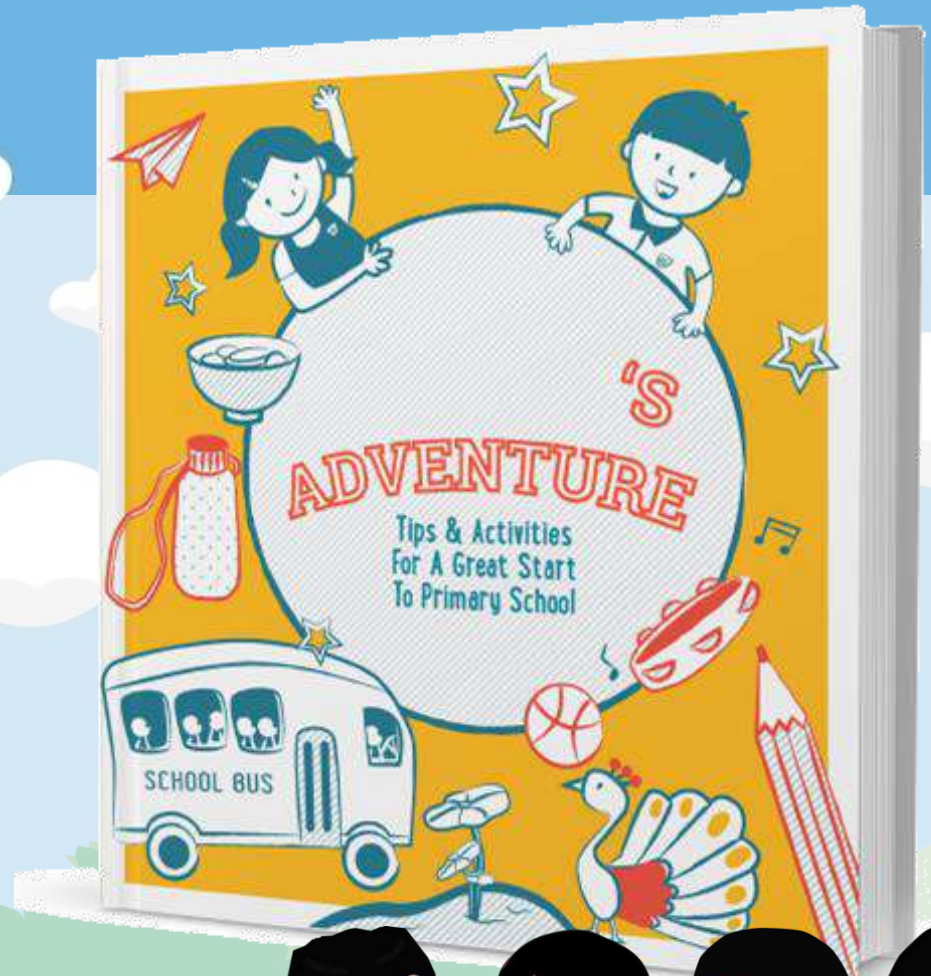
A Leader. A Keen Learner. A Friend. *Integrity • Respect • Excellence*





# ORIENTATION KIT

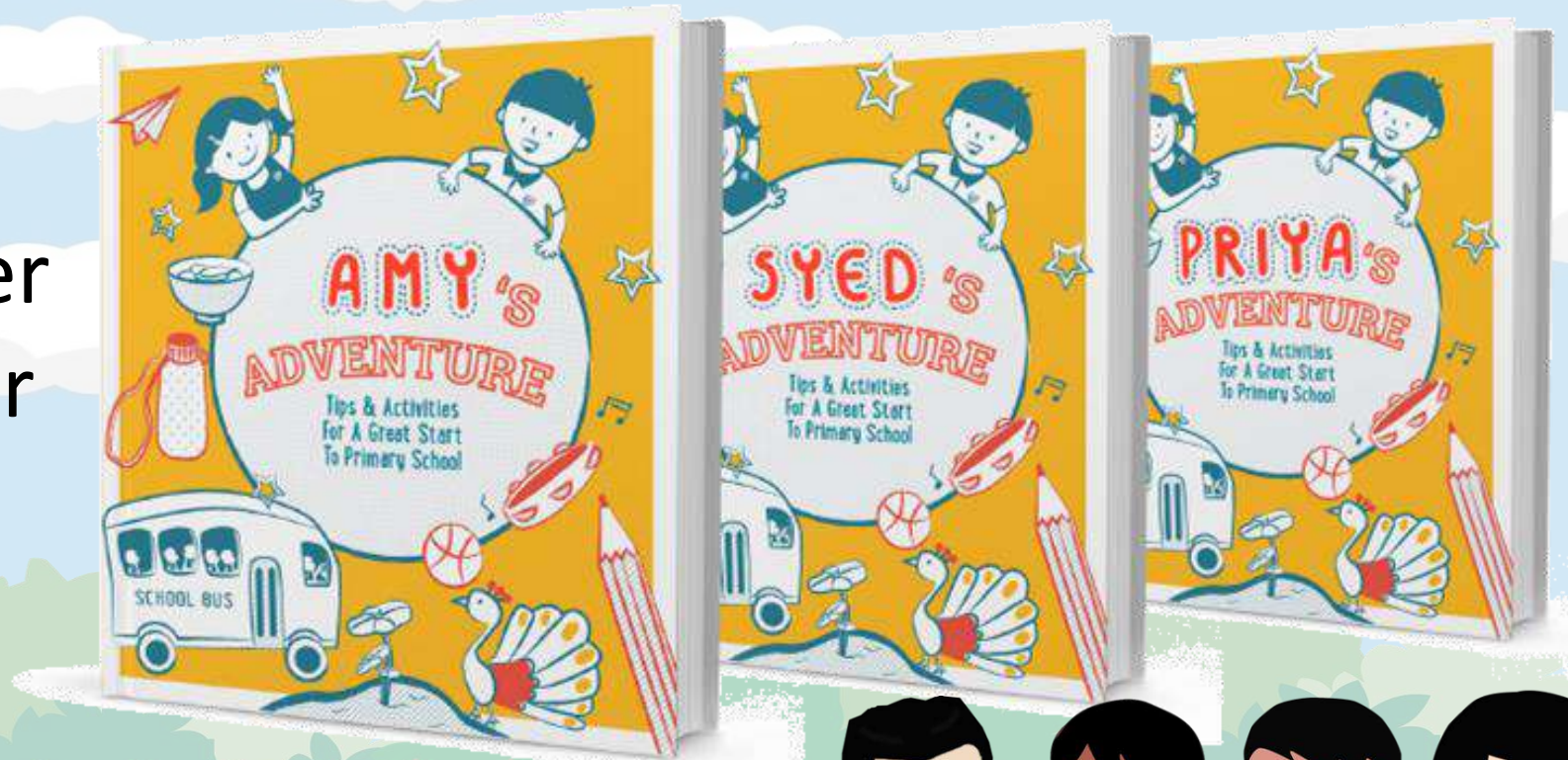
1. Parent-Child Activity Book
2. Information Sheet for Parents 2021
3. Primary 1 Book List 2021
4. Parent Support Group Notification
5. Dental Care Notification
6. Free & Easy Tour Guide for Parents



A Leader. A Keen Learner. A Friend. *Integrity • Respect • Excellence*

# ORIENTATION KIT

Personalise the cover page by writing your child/ward's name.



A Leader. A Keen Learner. A Friend.

*Integrity • Respect • Excellence*



# ORIENTATION KIT



10 tips to help you navigate your child's first year in primary school.

A Leader. A Keen Learner. A Friend. *Integrity • Respect • Excellence*



# RELATING TO OTHERS



**Build your child's interpersonal skills by:**

- Modelling the use of friendly and polite phrases
  - “Hello! My name is... what is your name?” or “May I please...”
- Providing opportunities for your child to share and take turns during playtime with other children.
- Teaching them coping mechanisms (e.g. deep breaths, quiet corner, stop-think-do) to enable them to manage their emotions.

A Leader. A Keen Learner. A Friend.

*Integrity • Respect • Excellence*



# DEVELOPING GOOD HABITS

Routines help children learn to manage themselves.

Guide your child to do the following independently:

- Keep to a regular bedtime
- Make healthy food choices
- Pack their bag
- Dress themselves
- Buying food at the canteen



A Leader. A Keen Learner. A Friend.

*Integrity • Respect • Excellence*

# NURTURING +VE LEARNING ATTITUDES

Developing the right learning attitude in your child will help them to transit smoothly into the learning routines in primary school.

You can encourage your child to:

- Ask questions about their experiences and the world around them.
- Express their thoughts and feelings about and discuss what can be done if they have worries.
- Practice life skills independently (e.g. buy food and drink on their own, ask for permission etc).



A Leader. A Keen Learner. A Friend.

*Integrity • Respect • Excellence*



# CREATING A CONDUCTIVE HOME ENVIRONMENT

## A Space Of My Own

Create a comfortable space at home for your child to do work quietly. Praise your child when you notice him or her using this space to complete work on their own.

Your child can use the space below to design their study spot.

Set up a conducive home environment so that your child can learn both at home and in school:

- Encourage your child to learn English and their Mother Tongue, through picture books, language games or songs.
- Set aside space in your home where your child can read and finish their homework.

46

A Leader. A Keen Learner. A Friend.

*Integrity • Respect • Excellence*



# ORIENTATION KIT



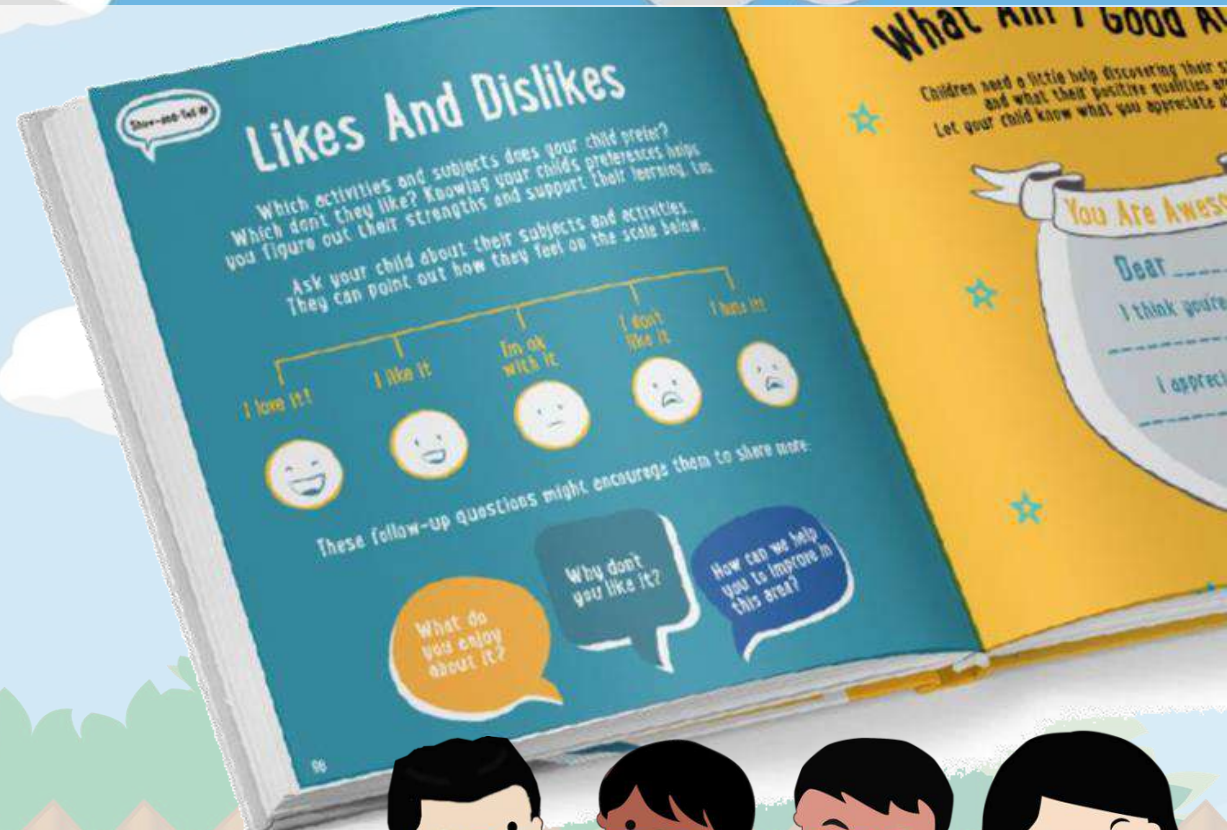
A Leader. A Keen Learner. A Friend.

*Integrity • Respect • Excellence*





# ORIENTATION KIT



A Leader. A Keen Learner. A Friend.

*Integrity • Respect • Excellence*

# DENTAL CARE

All parents/guardian are required to submit an online consent for your child/ward's dental care in primary school through the following link:

<https://childconsent.hpb.gov.sg/ship/process/SHIP/OnlineChildConsentPortal>



A Leader. A Keen Learner. A Friend.

*Integrity • Respect • Excellence*

# RECESS



- Recess will be **30 minutes long daily.**

**Monday, Wednesday,  
Thursday and Friday**

8.30 – 9.00 a.m.

**Tuesday**

8.15 – 8.45 a.m.

A Leader. A Keen Learner. A Friend.

*Integrity • Respect • Excellence*



# POSB SMART BUDDY



A Leader. A Keen Learner. A Friend.

*Integrity • Respect • Excellence*



# POSB SMART BUDDY



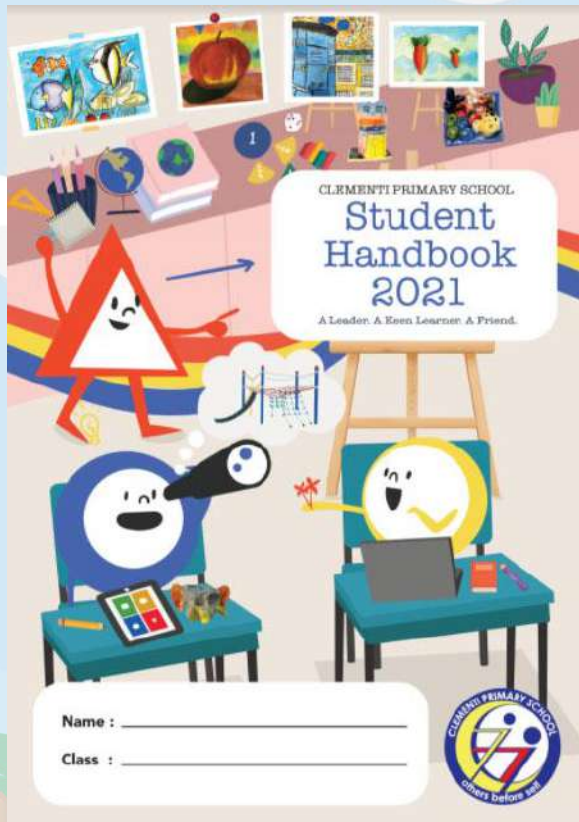
- Your child will be able to make payments at the school bookshop, canteen and selected merchants outside of school using the SMART Buddy watch.
- You will be able to pre-set your child's daily allowance, and monitor their expenses and savings conveniently with a mobile app.
- They can check their allowance by scanning their smart buddy watch at two locations in the canteen.

A Leader. A Keen Learner. A Friend.

*Integrity • Respect • Excellence*



# PUPIL HANDBOOK



- The handbook is given to all Clementians on the first day of school. Each Clementian is given a complimentary copy.
- Please ensure that the Personal Information page is filled up by **Wednesday, 6 January 2021**.
- The school rules can be found in the Pupil Handbook and are to be observed at all times.

A Leader. A Keen Learner. A Friend.

*Integrity • Respect • Excellence*



# ABSENCE FROM SCHOOL

- Absence from school **must be supported by a doctor's MC.**
- Parents are advised not to take their children out of school during term time.
- Request for absence during term time must be made to **the Principal** through the Form Teacher at least two weeks in advance.
- If you would like to take your child/ward home before school dismissal, parents/guardian must sign him/her out at the General Office.



# WHAT'S NEXT?



## Primary 1 Orientation Day

Free & Easy Virtual Tour

Guide for Parents/Guardians and P1 Clementians



1

### School Directory



2

### Learning Support for Math (LSM) and Learning Support Programme for English (LSP) Rooms



Location: Level 4, New Block

Scan the QR Code or visit this URL:  
<https://share.nearpod.com/QXSitSIQQR>

3

### Library@CTP



Location: Level 2, New Block

Scan the QR Code or visit this URL:  
<https://share.nearpod.com/35RYwxfQQR>

4

### Programme for Active Learning (PAL) Room



Location: Level 5, Main Block

Scan the QR Code or visit this URL:  
<https://share.nearpod.com/lZVkbItPQR>

4

### Art Rooms

Location: Level 5, Main Block



Scan the QR Code or visit this URL:  
<https://share.nearpod.com/s1uytQCnQR>

5

### School Courtyard

Location: Level 1, Next to the Canteen



Scan the QR Code or visit this URL:  
<https://share.nearpod.com/uR2GGsigQR>

6

### School Canteen

Location: Level 1, next to the Courtyard



Scan the QR Code or visit this URL:  
<https://share.nearpod.com/QFBCNvjvbb>





# MOE SUPPORT NETWORK

## MOE website

On latest announcements, policies and data

[www.moe.gov.sg](http://www.moe.gov.sg)

## Schoolbag.sg

Through articles and multimedia content, Schoolbag provide parents and general public with information and insights related to education, tips for parent involvement and features on school programmes.

[www.schoolbag.sg](http://www.schoolbag.sg)

## MOE on Facebook

[www.facebook.com/moesingapore](http://www.facebook.com/moesingapore)

## MOE on Twitter

[www.twitter.com/#!/MOEsg](http://www.twitter.com/#!/MOEsg)

## MOE on YouTube

[www.youtube.com/moespore](http://www.youtube.com/moespore)

## MOE on Instagram

[www.instagram.com/moesingapore](http://www.instagram.com/moesingapore)

A Leader. A Keen Learner. A Friend. *Integrity • Respect • Excellence*



# Q & A SESSION

A Leader. A Keen Learner. A Friend. *Integrity • Respect • Excellence*



# FEEDBACK



<https://tinyurl.com/CTPP12019>

A Leader. A Keen Learner. A Friend.

*Integrity • Respect • Excellence*



THANK YOU

A Leader. A Keen Learner. A Friend. *Integrity • Respect • Excellence*

